

**\$3,500,000 USD**

## Chametla

La Paz

PROPERTY TYPE <b>Land</b>	AREA <b>63,080,000 m<sup>2</sup></b>
BEDROOMS <b>0</b>	BATHROOMS <b>0</b>
MLS NUMBER <b>26-812</b>	

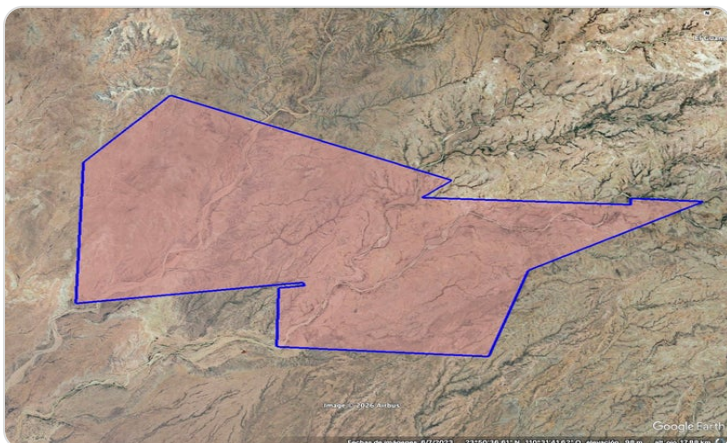
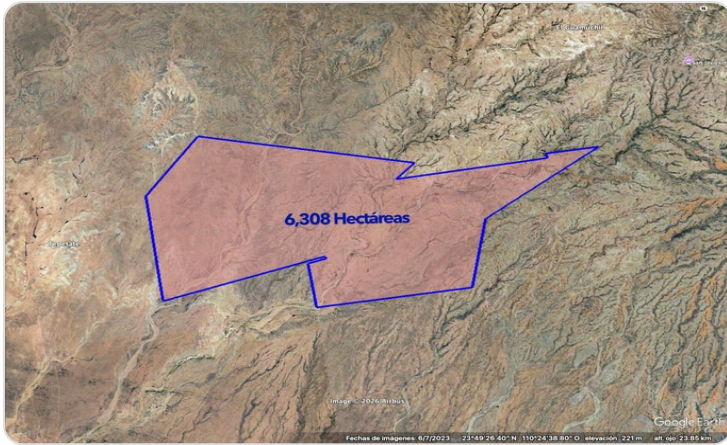
# Description

A once-in-a-lifetime Baja mega-land acquisition. Rancho La Mora & Los Laureles present a monumental landholding southwest of Km 39 on the La Paz-Constitución Highway: 42,940,064 m<sup>2</sup> (4,294 ha) titled, with expansion in regularization to 63,080,000 m<sup>2</sup> (6,308 ha / 15,587 acres). Offered at \$3.5M USD — APPROXIMATELY JUST 5 CENTS PER M<sup>2</sup>. A scale rarely available at a virtually irreplaceable basis.

This is an extraordinary generational acquisition. Semi-flat 2% slope, 18 km to CFE power, 42 km to the coast. Ideal for renewable energy, large-scale agriculture, or a city-scale master development practically almost given for free.

Para la versión en español da click en "More"...

# Property Gallery



# Property Location

## La Paz

Chametla

<b>Latitude</b> 23.905640	<b>Longitude</b> -110.622206
------------------------------	---------------------------------



Powered by Geoapify | © OpenMapTiles © OpenStreetMap contributors

**Scan QR to view property online**



<https://beincabo.com/property-detail/?mls=26-812>