



\$617,059 USD

Chametla

La Paz

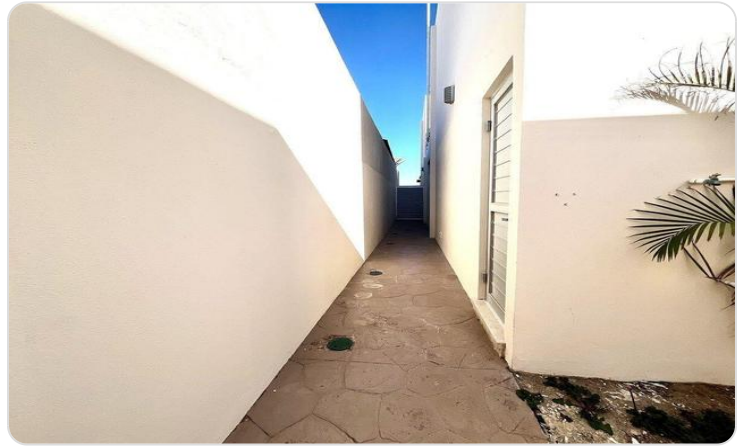
PROPERTY TYPE Houses	AREA 10,356 m²
BEDROOMS 4	BATHROOMS 4
MLS NUMBER 26-796	

Description

Two-story residence located in Colonia Chametla, within Residencial Puertazul, in La Paz. Built on a 601.75 m² lot with 360.72 m² of construction, the property offers spacious indoor and outdoor areas. It features 3 bedrooms, each with a full bathroom, a primary bedroom with a walk-in closet, living and dining areas, a high-quality kitchen, and an exterior bathroom for the social area. The outdoor area includes a large swimming pool, terrace with a view, and a spacious patio. It also includes an independent rear room with a bathroom and private access, ideal for guests or an office. Secure and private property, ideal for living or investment.

The price must be paid in mexican pesos by the

Property Gallery



Property Location

La Paz

Chametla

Latitude
24.097647

Longitude
-110.398997



Scan QR to view property online



<https://beincabo.com/property-detail?mls=26-796>