



\$6,935,000 USD

Caleta Loma

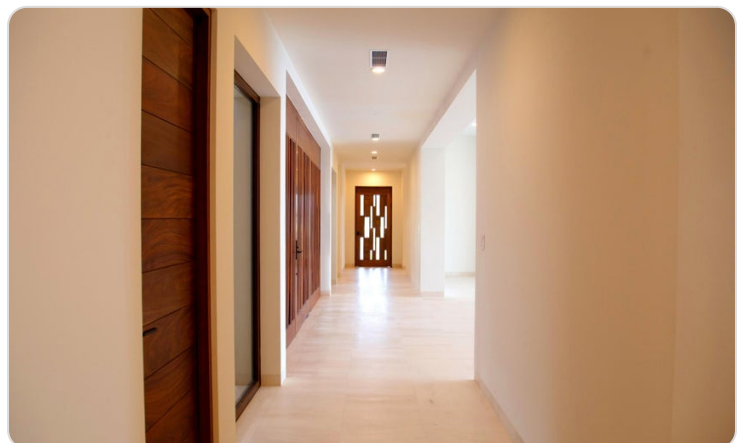
San Jose Corridor

PROPERTY TYPE Houses	AREA 14,870 m²
BEDROOMS 6	BATHROOMS 6
MLS NUMBER 26-624	

Description

Expect to be wowed with this single level Contemporary Spec Home. Welcome entry way over water and stone walls come alive with through native vegetation. Once inside this unique House, the views will capture you. Kitchen designed with fine lines, sleek cabinetry and monochromatic hues. All five + bedrooms with en-suite baths emanate a tranquil environment featuring soft tones and a spa-like atmosphere. Smart Home ready. Outside, an infinity pool catches a sunken spa at one end with relaxing sundecks and a recessed fire-pit. The end result is your own private oasis overlooking Palmilla Bay, San Jose Coastline and Punta Gorda.

Property Gallery



Property Location

San Jose Corridor

Caleta Loma

Latitude
23.019244

Longitude
-109.719774



Scan QR to view property online



<https://beincabo.com/property-detail?mls=26-624>