



**\$199,500 USD**

## **Palo Blanco**

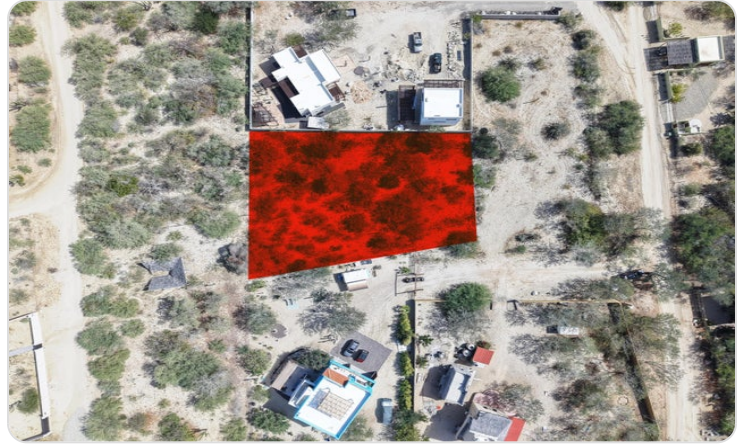
East Cape

PROPERTY TYPE <b>Land</b>	AREA <b>1,559 m<sup>2</sup></b>
BEDROOMS <b>0</b>	BATHROOMS <b>0</b>
MLS NUMBER <b>26-530</b>	

# Description

Nestled in the tranquil Palo Blanco neighborhood with excellent neighbors. This flat, easy-to-build lot is rich in natural vegetation and conveniently close to town. Located on a quiet dead-end road, the property offers added privacy and no traffic. Water and power are available at the property line, and the beach is less than a 10-minute walk away.

# Property Gallery

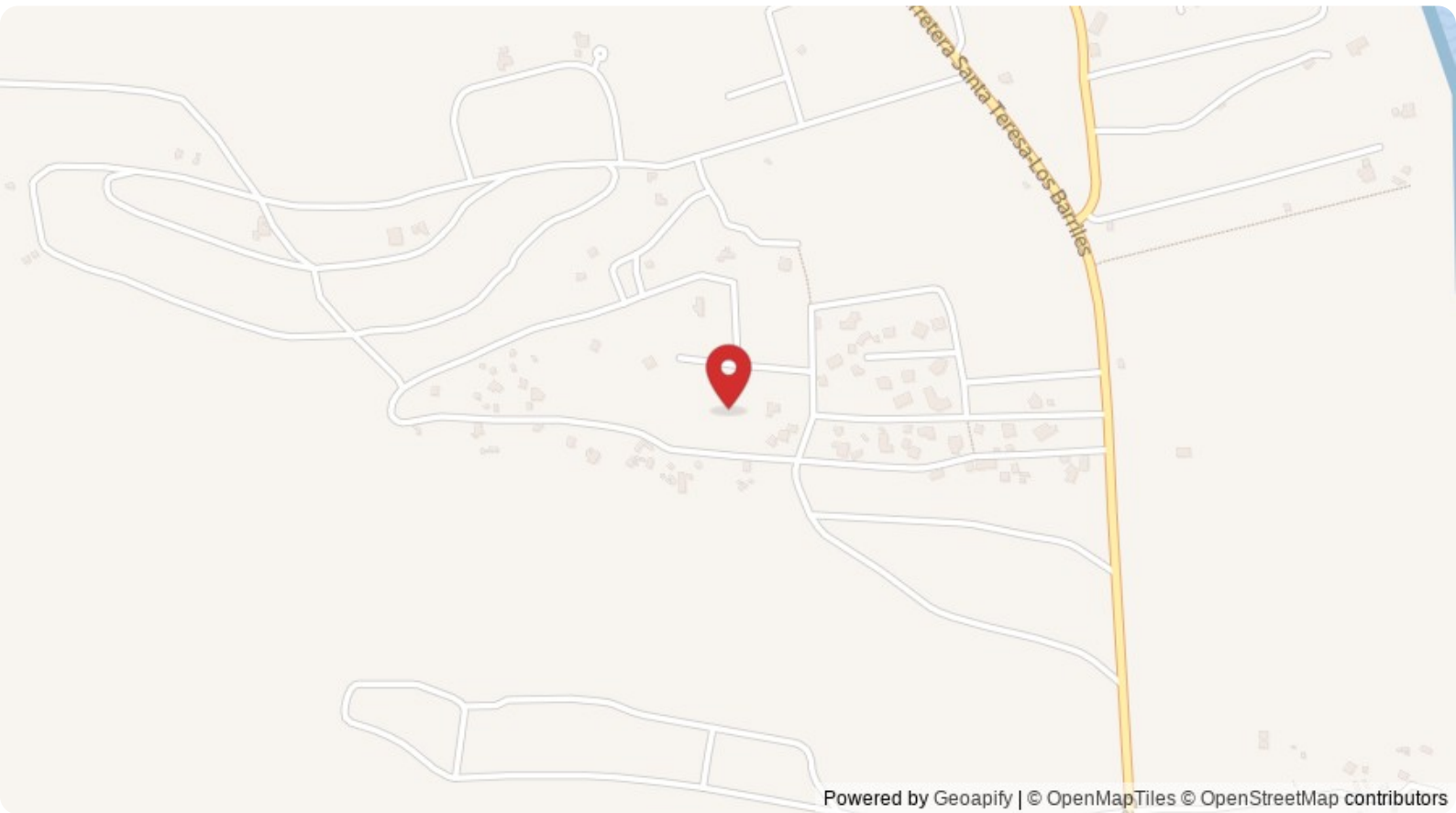


# Property Location

## East Cape

Palo Blanco

<b>Latitude</b> 23.706236	<b>Longitude</b> -109.710112
------------------------------	---------------------------------



**Scan QR to view property online**



<https://beincabo.com/property-detail?mls=26-530>