



**\$350,000 USD**

## **Ladera Phase 1**

San Jose Corridor

PROPERTY TYPE <b>Condos</b>	AREA <b>1,354 m<sup>2</sup></b>
BEDROOMS <b>2</b>	BATHROOMS <b>2</b>
MLS NUMBER <b>26-2925</b>	

# Description

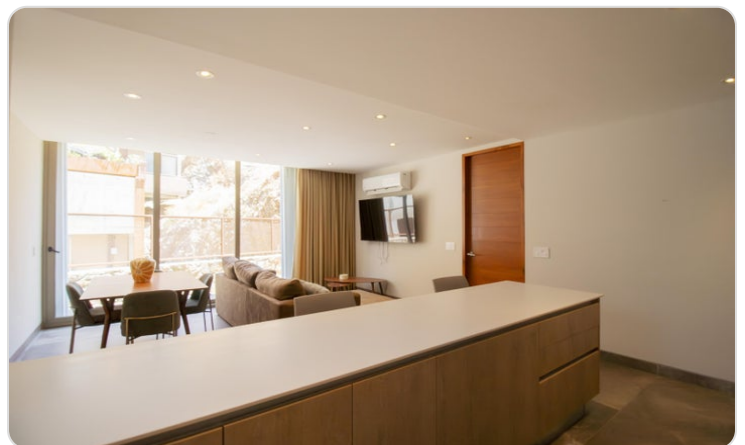
Exclusive 2-Bed, 2-Bath in Ladera -- Cerro Colorado | \$350,000 USD (Best Price in the Area)

We're proud to offer this exceptional 2-bedroom, 2.5-bathroom apartment in Ladera San José -- thoughtfully designed with extra space and comfort that goes well beyond the typical layout.

Perfectly positioned between the Palmilla, Querencia, and El Dorado golf courses, it sits in one of Los Cabos' most coveted and fastest-growing areas. With a new shopping center, club house, and second phase all underway, this is a rare opportunity to get in early and watch your investment appreciate.

You'll love the unbeatable convenience: a top school like Picacho McGregor, H+ Hospital, the Hampton Inn, gyms, a s

# Property Gallery

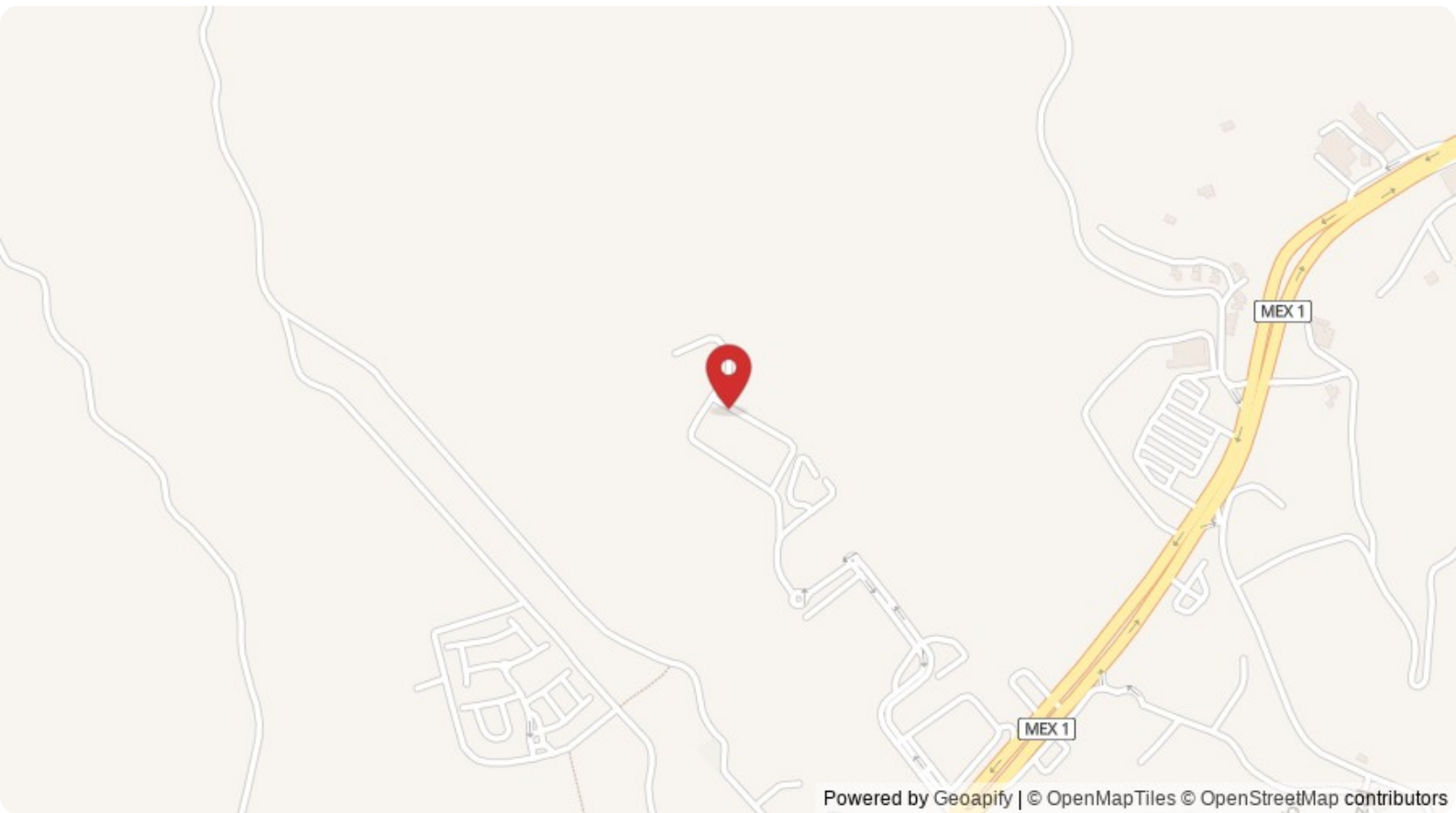


# Property Location

## San Jose Corridor

Ladera Phase 1

<b>Latitude</b> 23.005742	<b>Longitude</b> -109.737052
------------------------------	---------------------------------



**Scan QR to view property online**



<https://beincabo.com/property-detail/?mls=26-2925>