



\$375,000 USD

El Tule-Inland:General

San Jose Corridor

PROPERTY TYPE Land	AREA 1,119 m²
BEDROOMS 0	BATHROOMS 0
MLS NUMBER 26-291	

Description

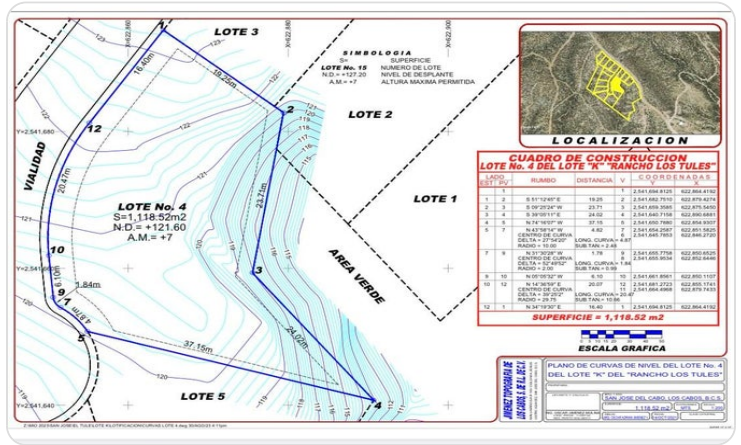
MOTIVATED SELLER!

Discover Lot 4 K, a premier homesite located within the Régimen Condominial Rancho Los Tules, one of the most desirable low-density residential enclaves in the Chileno corridor of Los Cabos. This 1,118.52 m² (12,037.45 sq ft) lot offers an exceptional opportunity to design and build a custom luxury residence in a tranquil, secure, and well-planned community.

The property boasts 47.84 linear meters (156.9 ft) of street frontage, providing excellent accessibility, design flexibility, and strong architectural presence. Its generous dimensions allow for a spacious home footprint, landscaped gardens, terraces, and outdoor living areas.

From the lot, enjoy beautiful open

Property Gallery



Property Location

San Jose Corridor

El Tule-Inland:General

Latitude	Longitude
22.978875	-109.801230



Scan QR to view property online



<https://beincabo.com/property-detail?mls=26-291>