



**\$950,000 USD**

## The Tequila Ranch

Pacific

PROPERTY TYPE <b>Land</b>	AREA <b>2,480 m<sup>2</sup></b>
BEDROOMS <b>0</b>	BATHROOMS <b>0</b>
MLS NUMBER <b>26-2127</b>	

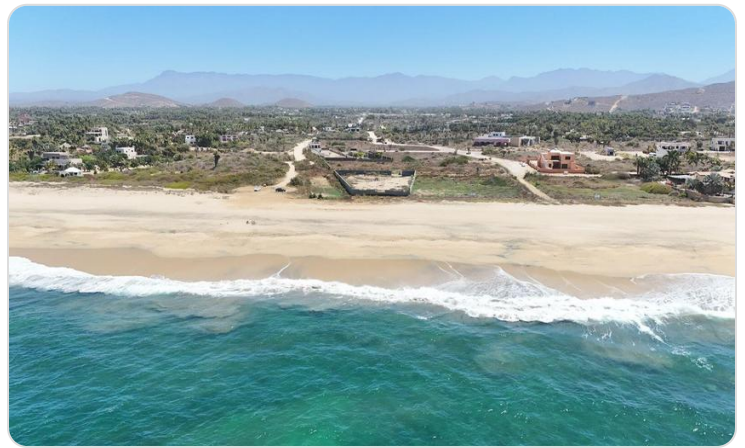
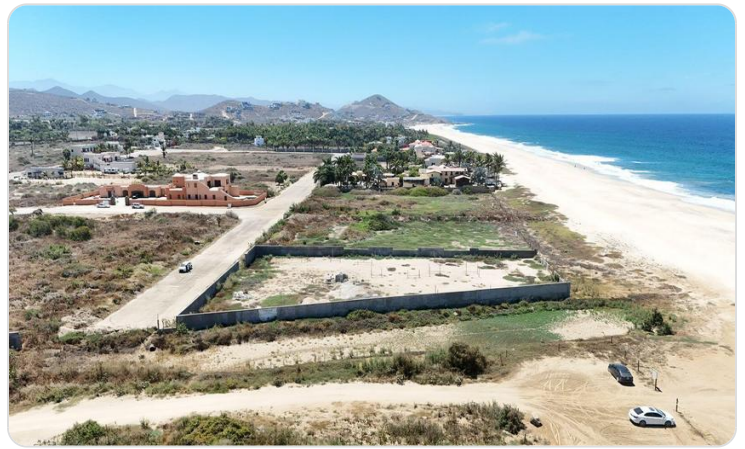
# Description

Positioned in one of the most desirable locations on the Pacific coast, this exceptional property offers 25 meters of direct ocean frontage, delivering uninterrupted views and the soothing sound of the waves right at your doorstep.

Set within a private, gated community, the property provides both exclusivity and peace of mind. A fully enclosed perimeter wall ensures added privacy, creating a serene retreat where you can truly unwind.

With services conveniently available on site, this property is perfectly suited for effortless living or a seamless development opportunity. Each day ends with breathtaking sunsets over the Pacific, an ever changing display of color that makes this locatio

# Property Gallery

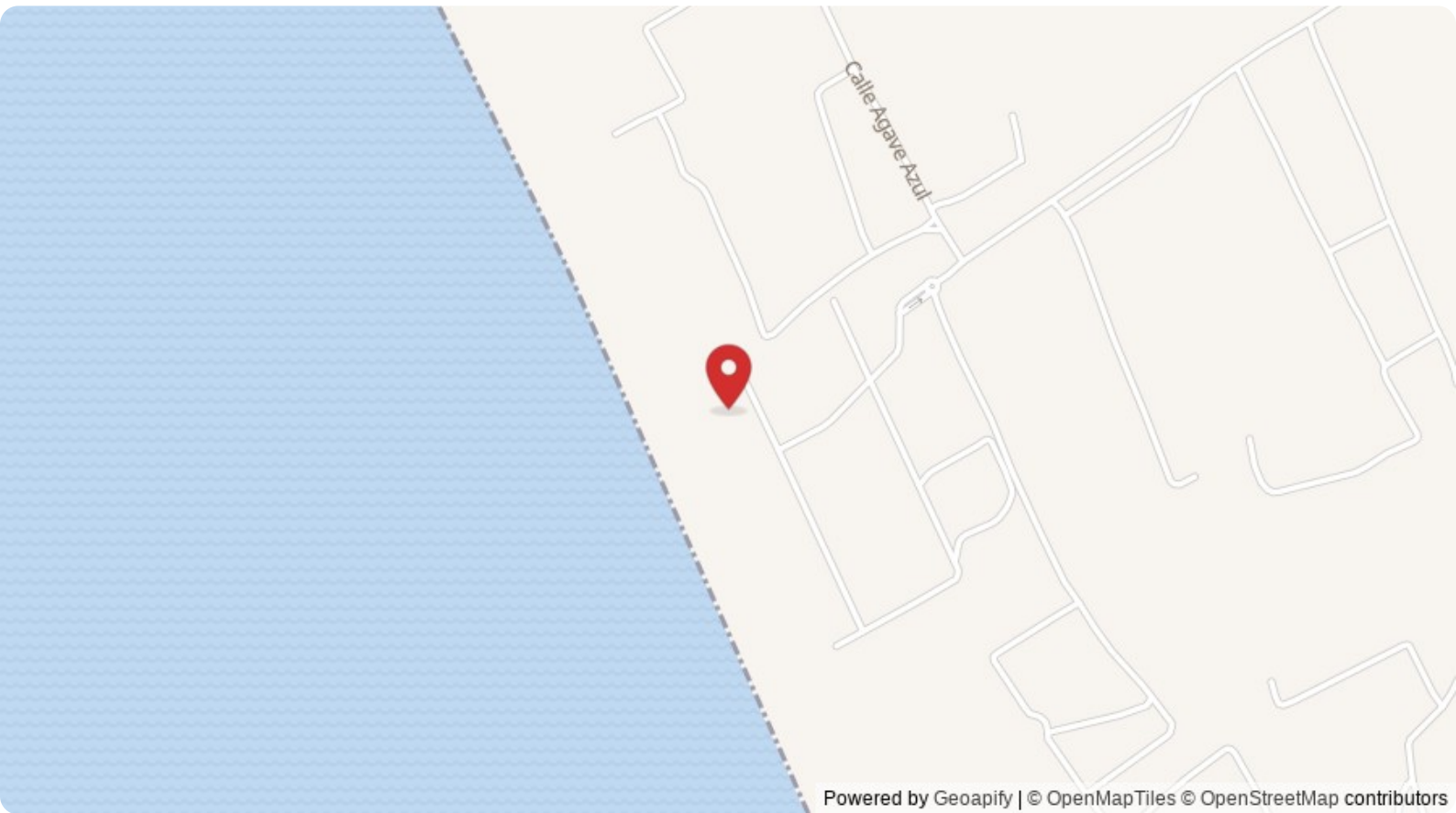


# Property Location

## Pacific

The Tequila Ranch

<b>Latitude</b> 23.354144	<b>Longitude</b> -110.191239
------------------------------	---------------------------------



Scan QR to view property online



<https://beincabo.com/property-detail/?mls=26-2127>