



\$772,000 USD

General

La Paz

PROPERTY TYPE Houses	AREA 4,897 m²
BEDROOMS 6	BATHROOMS 5
MLS NUMBER 26-1789	

Description

Dual-Residence Investment Opportunity in Private El Conchalito

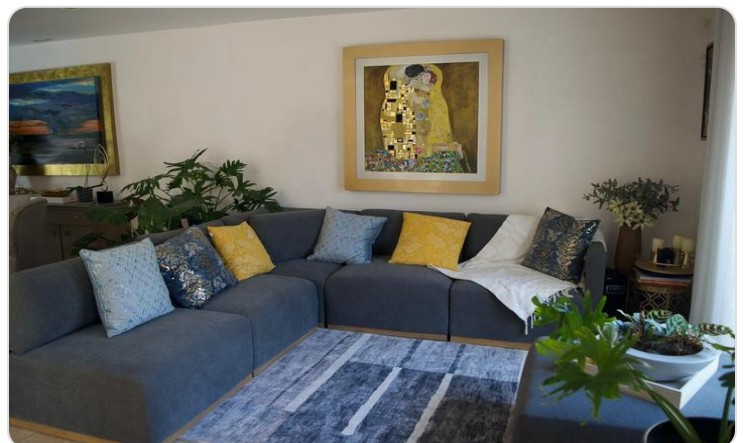
Two-story property in a highly connected area, minutes from Mariano Abasolo, 3 minutes from Chedraui Selecto, 10 minutes from La Paz Malecón, and 11 minutes from the airport.

Designed as a dual-residence, ideal for personal use or generating income through short- or long-term rentals. Features independent access from San Marino private street and Océano Pacífico, allowing seamless rental operation.

Includes a main house and a secondary unit with proven vacation rental history, sharing a fully equipped recreational area.

Delivered fully equipped with high-end finishes, A/C, blinds, ceiling fans, independent automatic g

Property Gallery



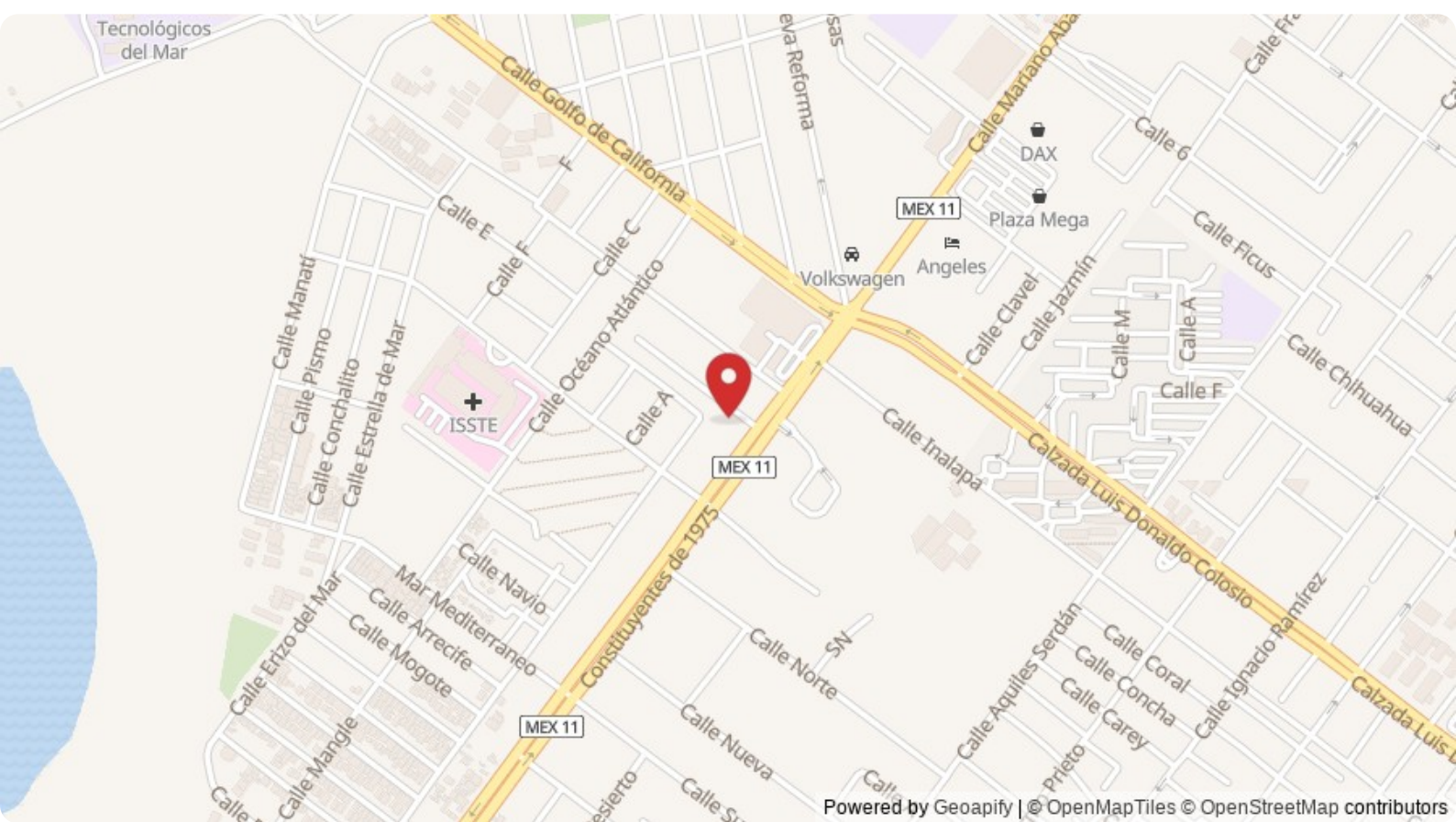
Property Location

La Paz

General

Latitude
24.137487

Longitude
-110.338170



Scan QR to view property online



<https://beincabo.com/property-detail/?mls=26-1789>