



\$321,795 USD

Portobello

La Paz

PROPERTY TYPE Houses	AREA 1,770 m²
BEDROOMS 3	BATHROOMS 3
MLS NUMBER 26-108	

Description

The Marina model in Portobello Residencial is, by far, the most comfortable in its category on the market. Its spacious and well-lit areas make this property a true home.

This property, along with the amenities offered by the development, provides a safe and complete environment where you can create unforgettable moments with family and friends.

Visit this property today and also take advantage of the benefits offered through the pre-construction scheme.

The price in US dollars is for reference; the price in pesos is \$5,392,718.75. Exchange rate calculated at \$17.00 Mexican pesos. (The exchange rate at the time of closing will be applied)

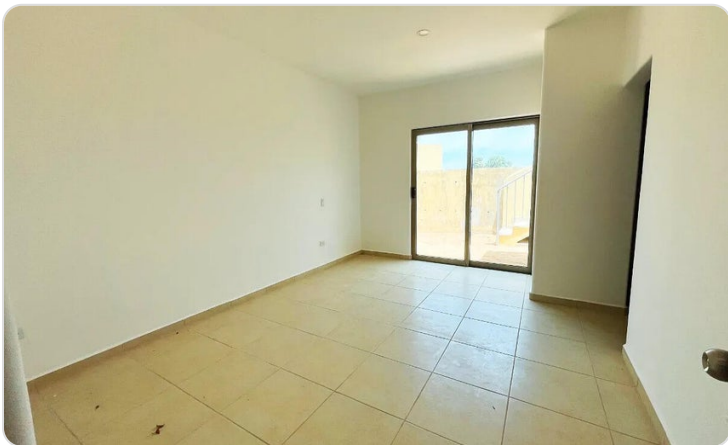
30% upon signing the contract.

30%

1

mon

Property Gallery



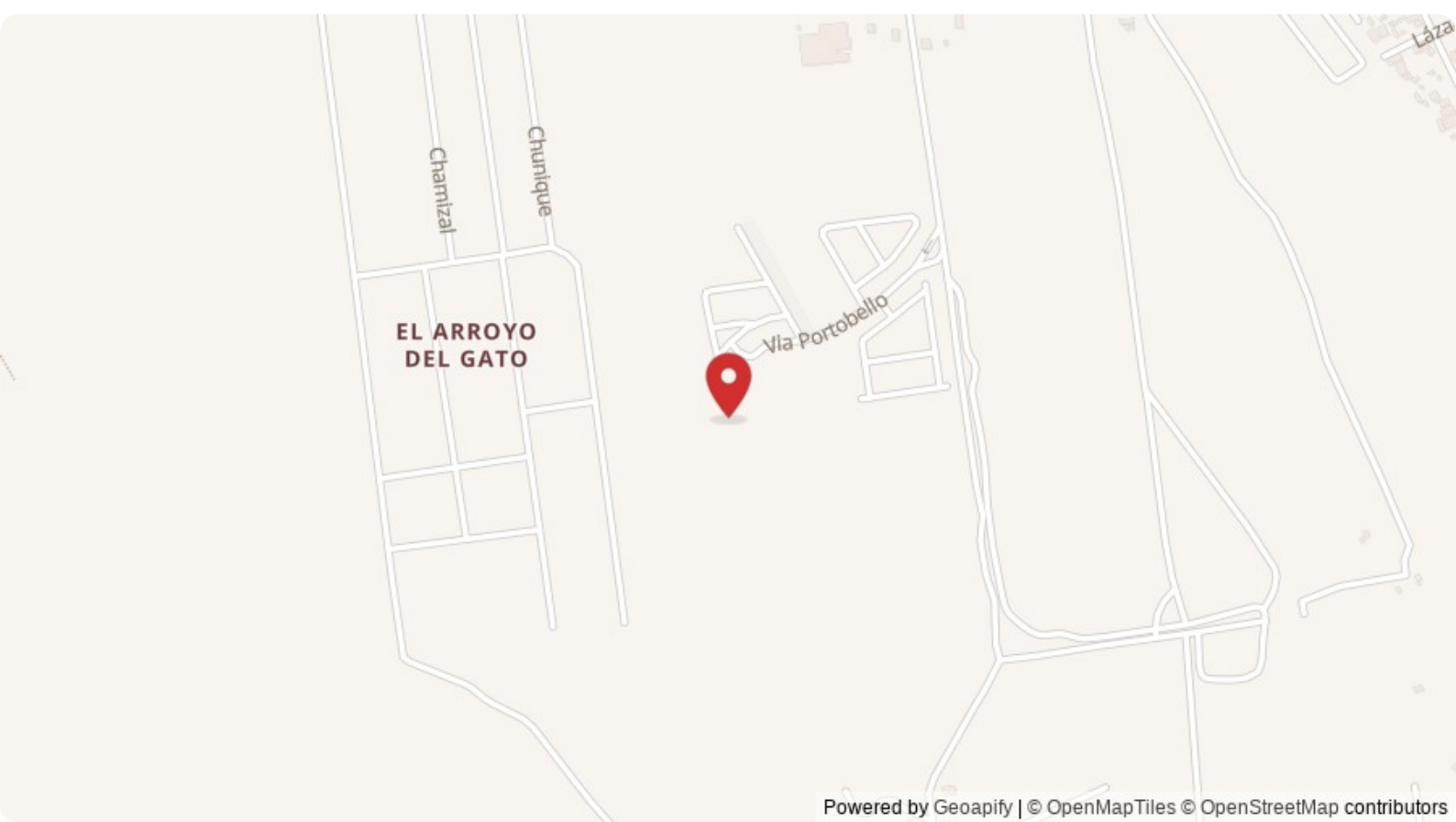
Property Location

La Paz

Portobello

Latitude
24.091100

Longitude
-110.389543



Powered by Geoapify | © OpenMapTiles © OpenStreetMap contributors

Scan QR to view property online



<https://beincabo.com/property-detail?mls=26-108>