



**\$950,000 USD**

## El Tule-Inland:General

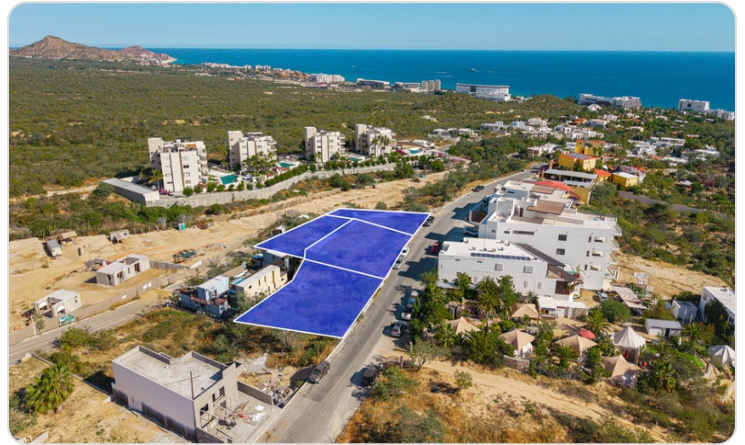
San Jose Corridor

PROPERTY TYPE <b>Land</b>	AREA <b>2,873 m<sup>2</sup></b>
BEDROOMS <b>0</b>	BATHROOMS <b>0</b>
MLS NUMBER <b>25-5927</b>	

# Description

Four contiguous lots offered together in El Tule, totaling 2,872.76 m<sup>2</sup> with 67.42 linear meters of street frontage. The land features a gentle, build-friendly slope—ideal for maximizing density and architectural efficiency—while capturing beautiful ocean views. Set in a low-density enclave between Cabo San Lucas and San José del Cabo, this location delivers tranquility, privacy, and quality of life, all within 15-20 minutes of both city centers. Preliminary development analysis supports a boutique vertical residential project with strong upside and attractive returns. No HOA, paved access, and excellent connectivity enhance long-term value. Motivated seller—an exceptional opportunity for dev

# Property Gallery

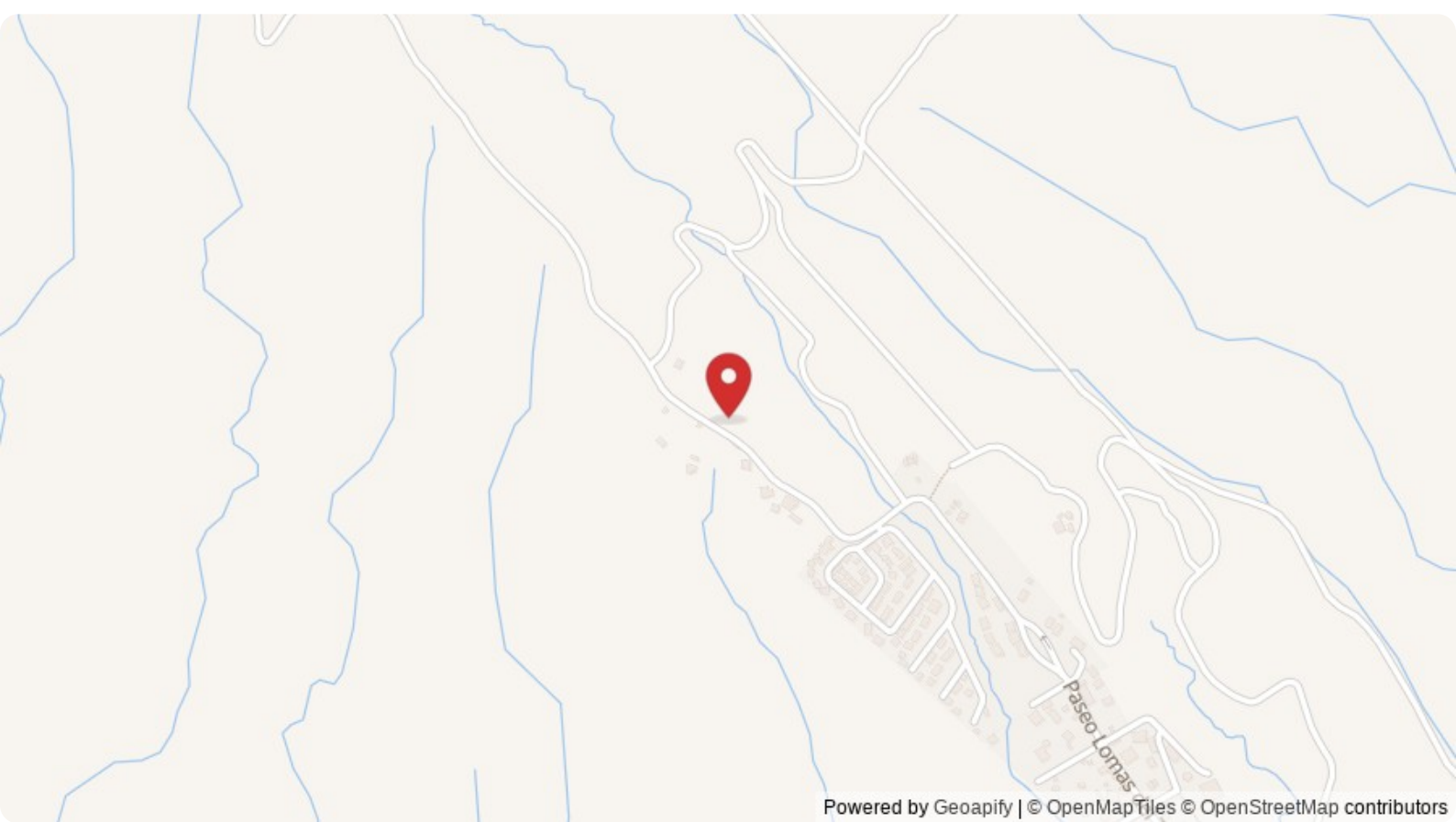


# Property Location

## San Jose Corridor

El Tule-Inland:General

<b>Latitude</b> 22.976752	<b>Longitude</b> -109.798664
------------------------------	---------------------------------



Powered by Geoapify | © OpenMapTiles © OpenStreetMap contributors

**Scan QR to view property online**



<https://beincabo.com/property-detail/?mls=25-5927>