

\$599,000 USD

Pedregal

La Paz

PROPERTY TYPE Land	AREA 1,365 m²
BEDROOMS 0	BATHROOMS 0
MLS NUMBER 25-5827	

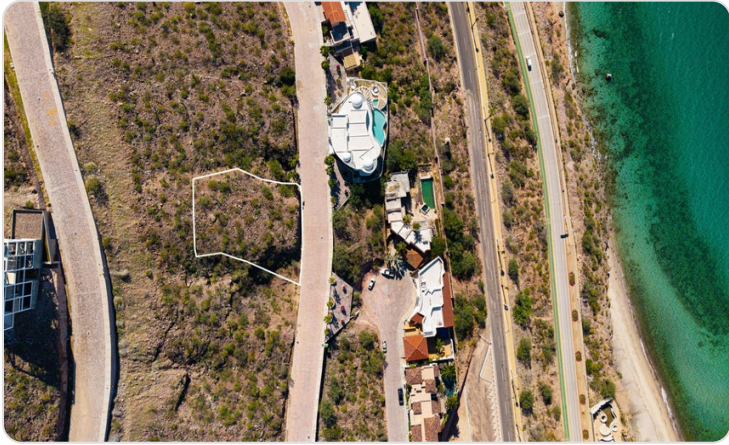
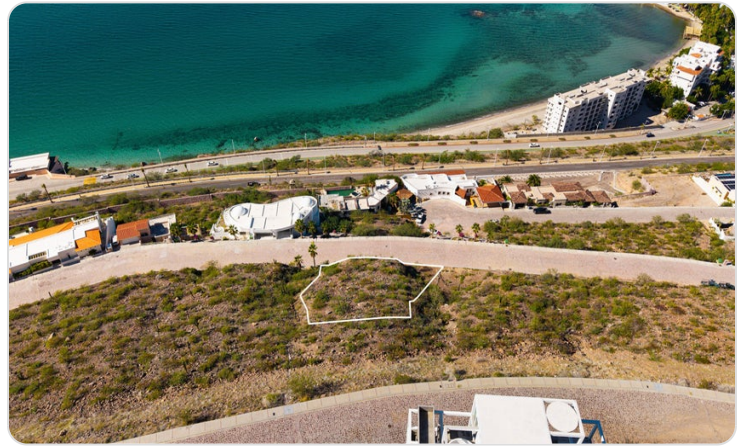
Description

Discover a unique opportunity to invest and build in one of the most exclusive residential areas of the city of La Paz. This exceptional lot features a total area of 1,365.104 m², ideal for developing a high-end custom home in a private, secure community with strong appreciation potential.

The property offers stunning panoramic views of the Bay of La Paz and the surrounding mountains, providing breathtaking sunsets and an unparalleled connection to nature. Its privileged location combines tranquility, privacy, and convenient access to the city's main services, beaches, and commercial areas.

An excellent option for those seeking quality of life, exclusivity, and a remarkable natural setting

Property Gallery



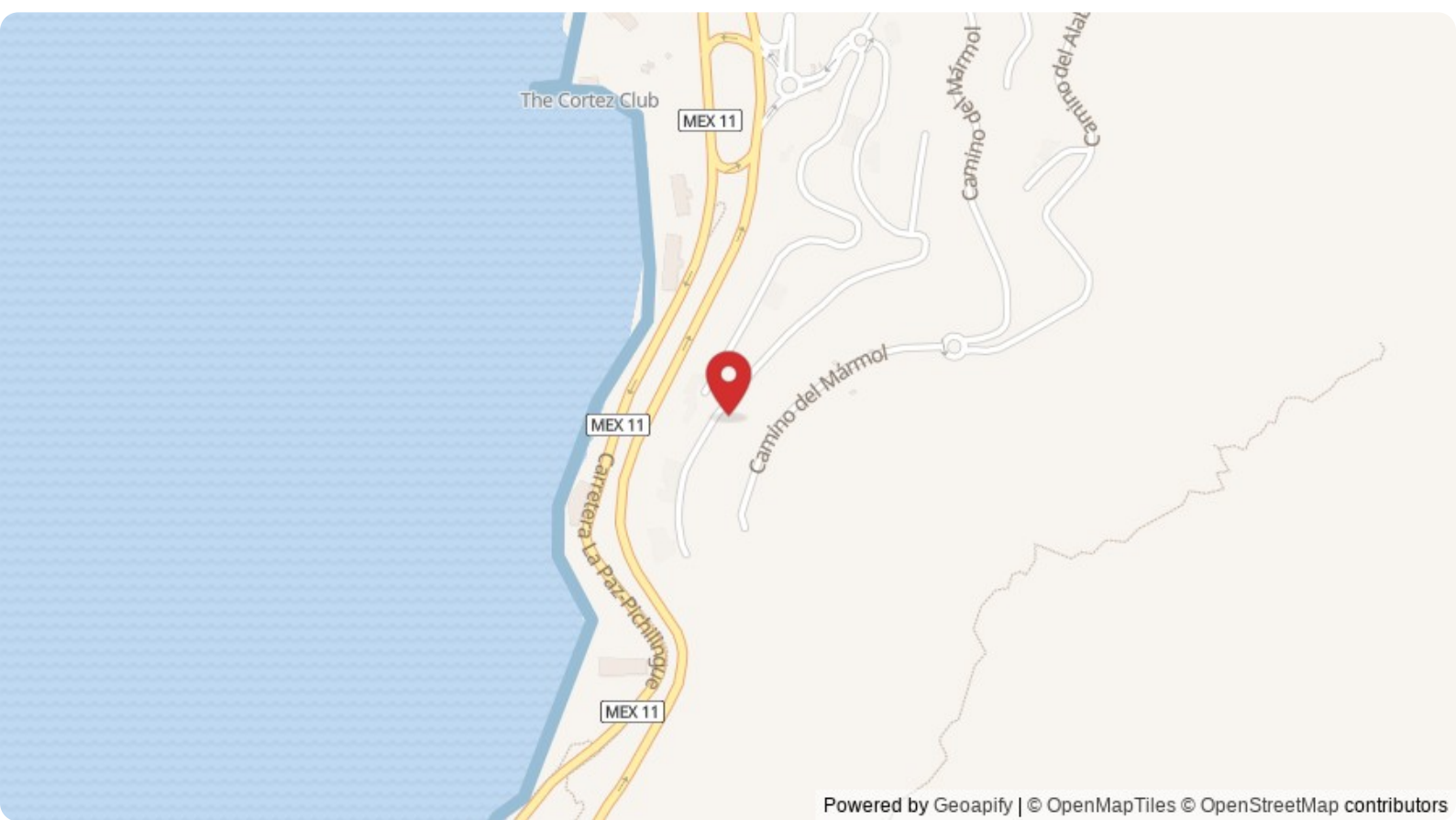
Property Location

La Paz

Pedregal

Latitude
24.199429

Longitude
-110.298544



Scan QR to view property online



<https://beincabo.com/property-detail/?mls=25-5827>