



\$589,777 USD

Rancho Paraiso Ests

Cabo Corridor

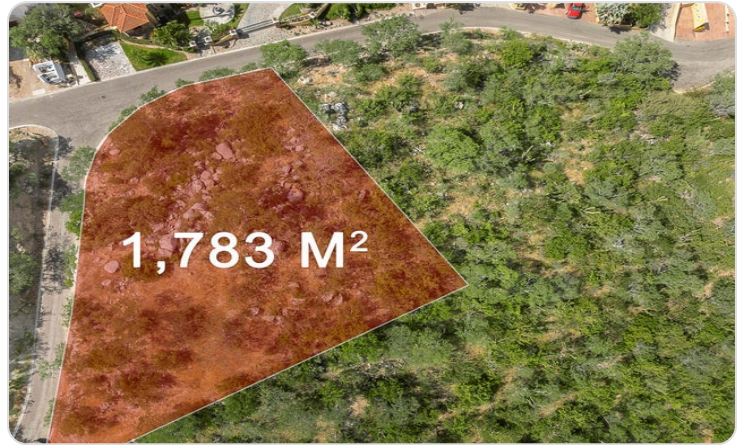
PROPERTY TYPE Land	AREA 1,783 m²
BEDROOMS 0	BATHROOMS 0
MLS NUMBER 25-4968	

Description

STUNNING ARCH AND BAY VIEWS!!! Perched at the highest point of Rancho Paraiso Estates, this premium corner lot boasts unobstructed, forever views of Land's End. Its unique location at the back of the community offers exceptional privacy, bordered by only one neighboring lot to the west.

With its generous size, this property provides endless possibilities for custom home design—ideal for creating a private oasis tailored to your vision. Approved architectural plans are included, allowing you to begin building your dream home in one of Cabo's most desirable communities.

Property Gallery



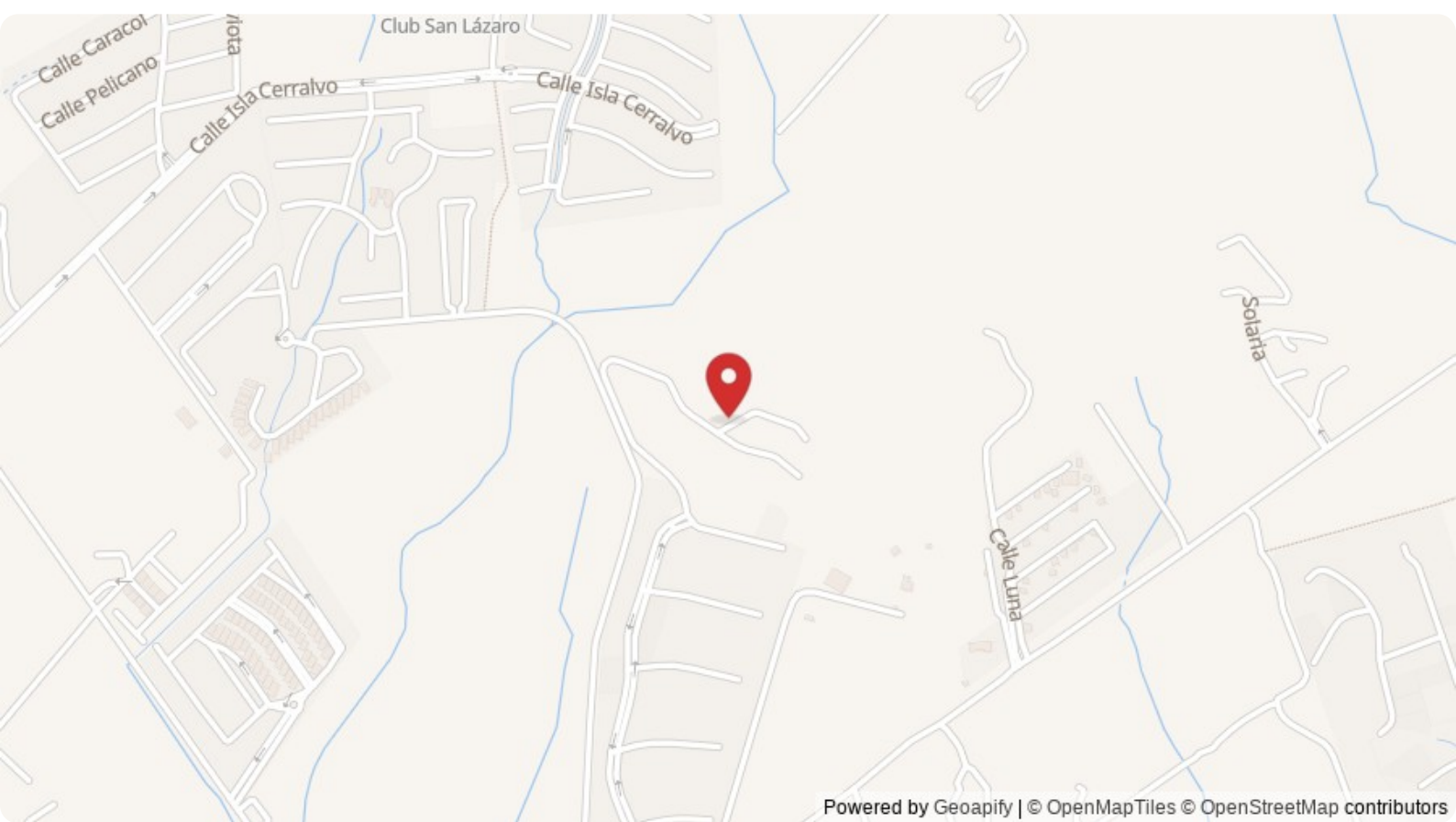
Property Location

Cabo Corridor

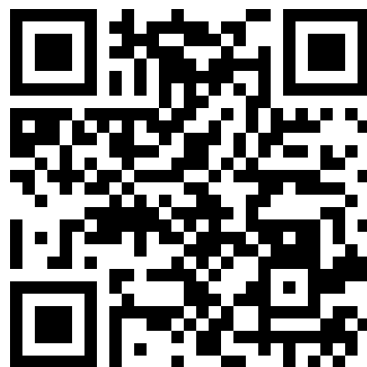
Rancho Paraiso Ests

Latitude
22.917488

Longitude
-109.875254



Scan QR to view property online



<https://beincabo.com/property-detail/?mls=25-4968>