



\$519,000 USD

Waicuri 1

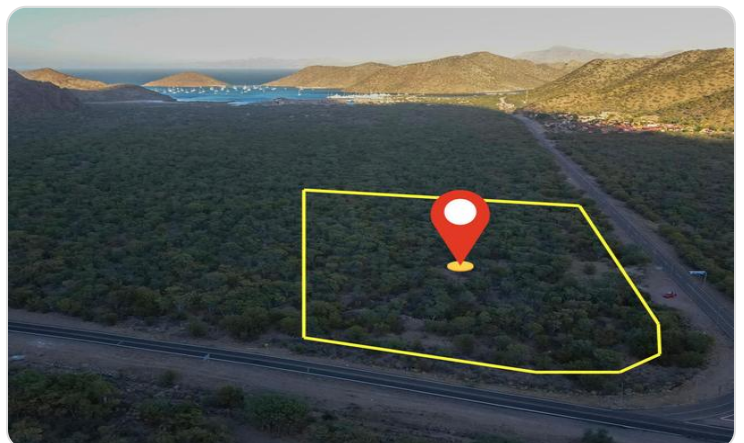
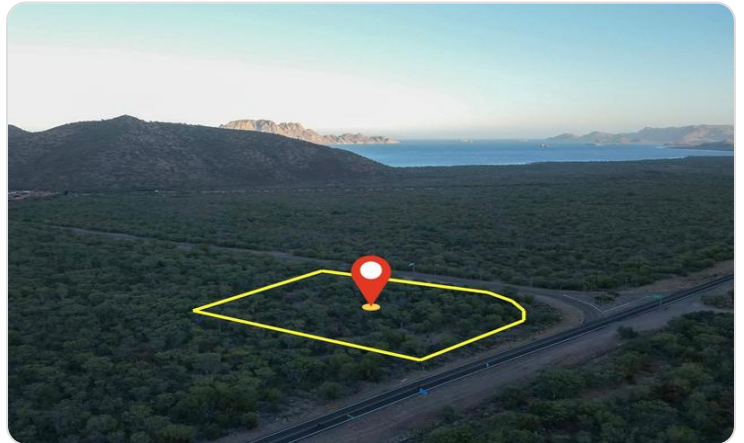
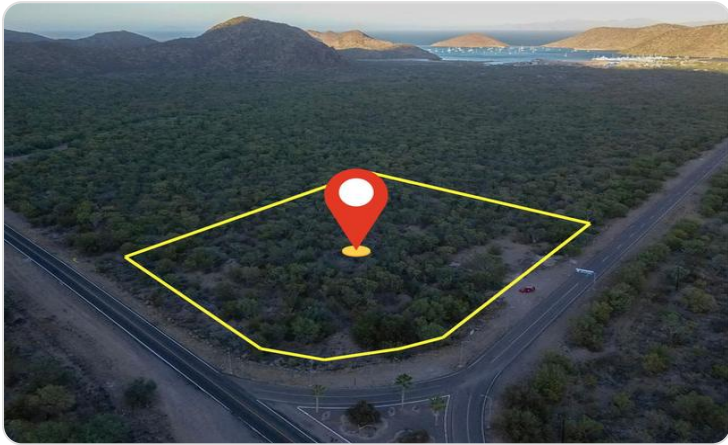
Loreto

PROPERTY TYPE Land	AREA 11,534 m²
BEDROOMS 0	BATHROOMS 0
MLS NUMBER 25-4211	

Description

Discover a unique investment opportunity in Puerto Escondido, Baja California Sur. This expansive 11,534 m² lot is ideally located between the main access road and the Transpeninsular Highway, offering excellent visibility and accessibility. With its generous size and prime position, the property is perfect for residential, commercial, or mixed-use projects. Just minutes from the stunning beaches and the vibrant charm of Puerto Escondido, this land combines convenience with growth potential--an ideal canvas for your next development.

Property Gallery



Property Location

Loreto

Waicuri 1

Latitude 0.000000	Longitude 0.000000
-----------------------------	------------------------------



Powered by Geoapify | © OpenMapTiles © OpenStreetMap contributors

Scan QR to view property online



<https://beincabo.com/property-detail/?mls=25-4211>