



\$24,500,000 USD

Palmilla Inland- General

San Jose Corridor

PROPERTY TYPE Land	AREA 159,440 m²
BEDROOMS 0	BATHROOMS 0
MLS NUMBER 25-3368	

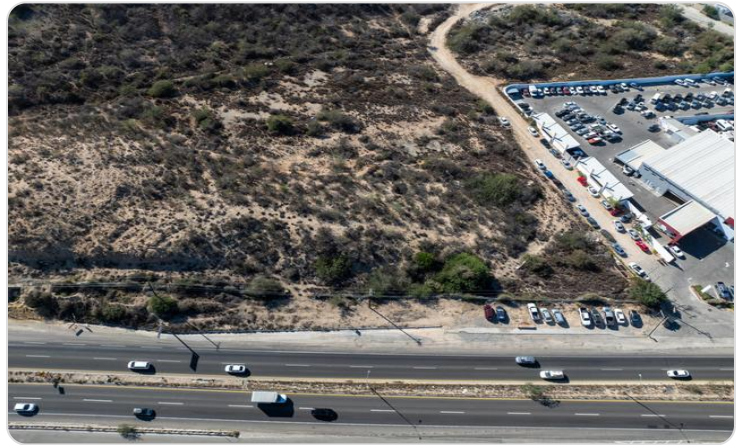
Description

Parcel Lot 3 El Zalate offers over 39 acre (15.94 hectares) of development land located in the San José Corridor. This strategic parcel features 237 linear meters of frontage along the Transpeninsular Highway.

The property is zoned RT0 (Residential-Tourism), allowing for a diverse range of development possibilities including residential communities, resort accommodations, or mixed-use projects, subject to applicable municipal planning and land use regulations.

Situated on an elevated topography, the site offers commanding ocean views of San José Bay and Punta Gorda.

Property Gallery



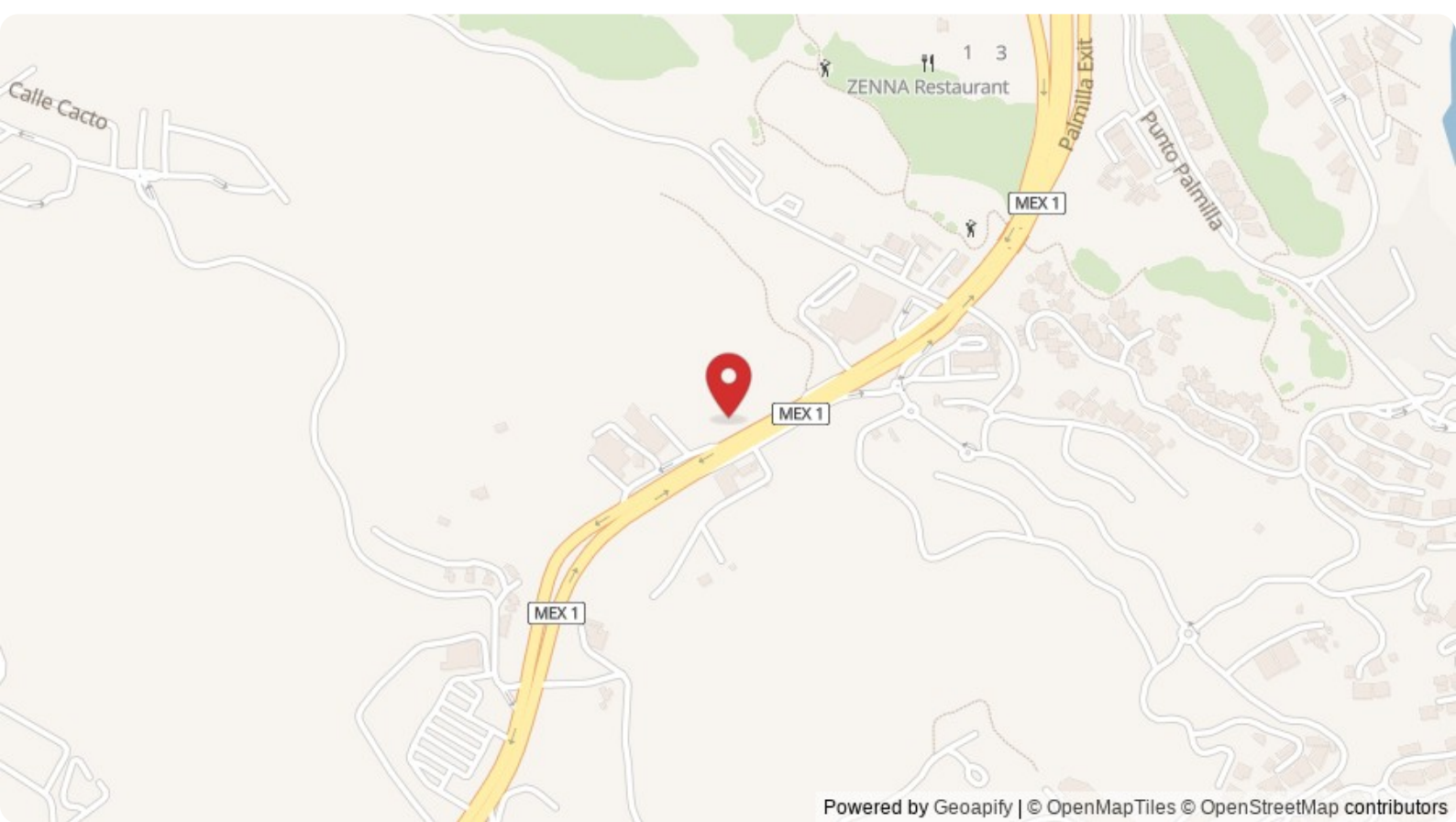
Property Location

San Jose Corridor

Palmilla Inland- General

Latitude
23.009318

Longitude
-109.727416



Scan QR to view property online



<https://beincabo.com/property-detail/?mls=25-3368>