



\$460,000 USD

Elias Calles

Pacific

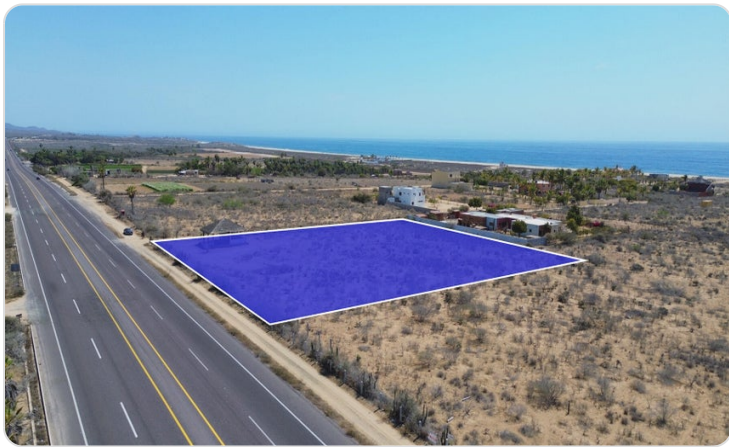
PROPERTY TYPE Land	AREA 5,421 m²
BEDROOMS 0	BATHROOMS 0
MLS NUMBER 25-2151	

Description

Strategically located just off the main highway and only a five-minute walk to the beach, this 5,421 square meter (approx. 1.34 acres) parcel offers prime potential for a mixed-use development, commercial venture, or long-term land investment.

Only five minutes from the beach, the lot provides the perfect setting for coastal development, with easy access to both the road and the shore. The property also includes an existing small office building that could be renovated for continued use or repurposed as a retail space, storefront, or secure storage.

Property Gallery



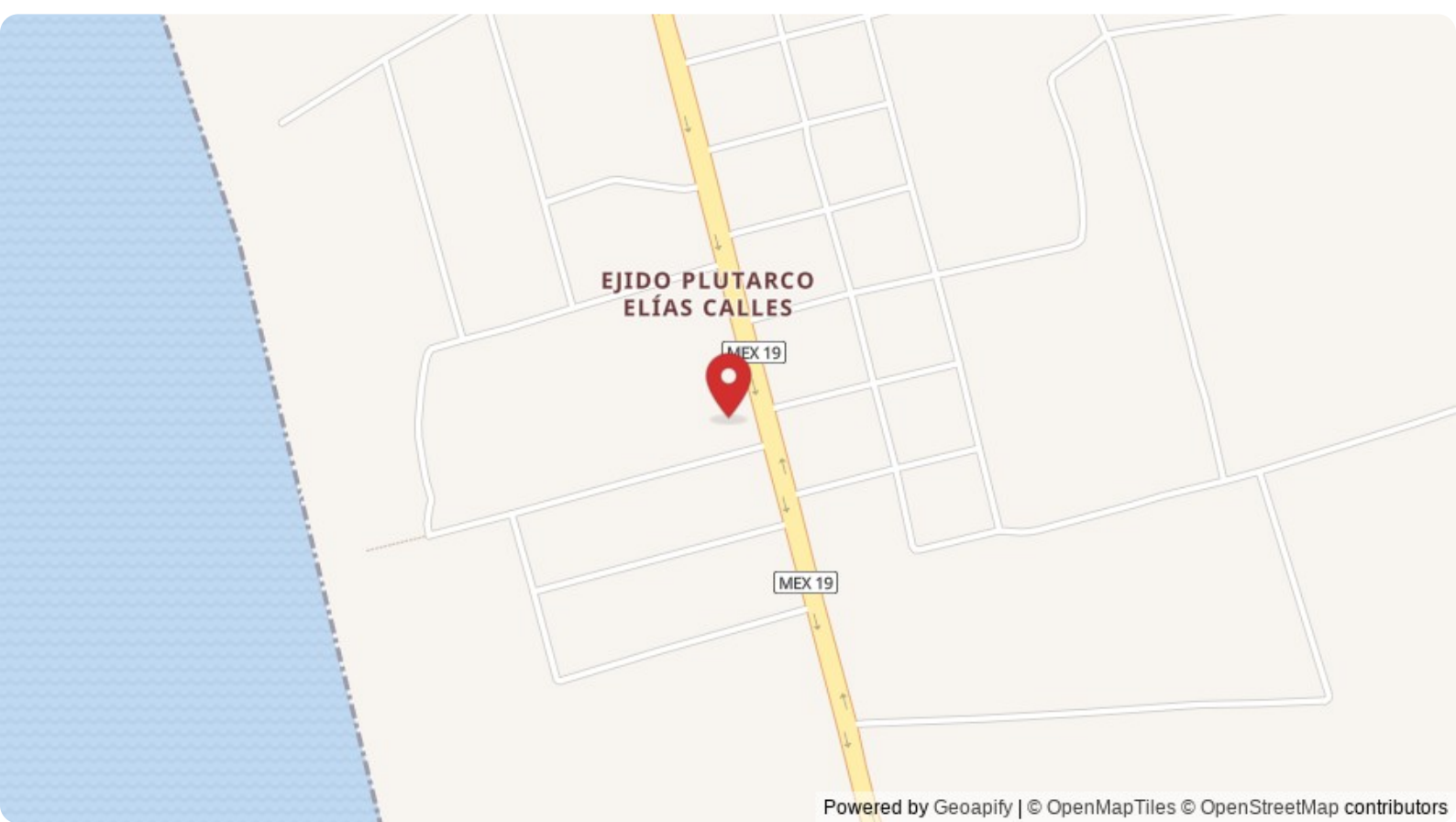
Property Location

Pacific

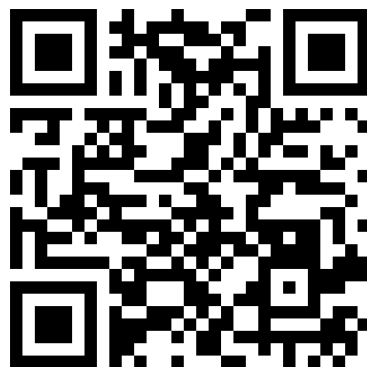
Elias Calles

Latitude
23.219336

Longitude
-110.143268



Scan QR to view property online



<https://beincabo.com/property-detail/?mls=25-2151>