

**\$355,000 USD**

## Ladera Phase 1

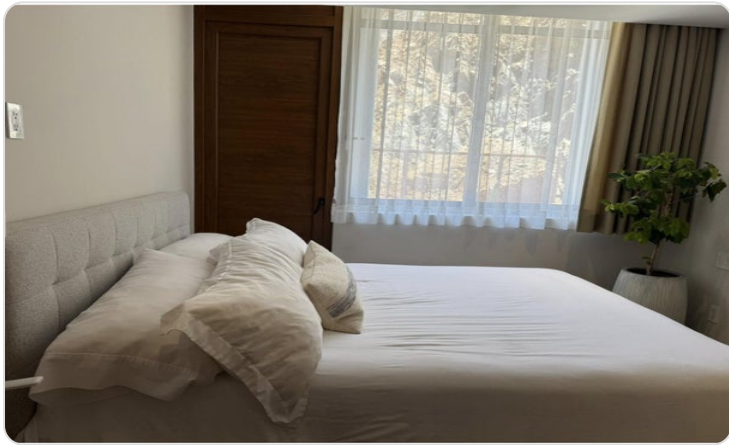
San Jose Corridor

|                                |                                    |
|--------------------------------|------------------------------------|
| PROPERTY TYPE<br><b>Condos</b> | AREA<br><b>1,354 m<sup>2</sup></b> |
| BEDROOMS<br><b>2</b>           | BATHROOMS<br><b>2</b>              |
| MLS NUMBER<br><b>25-2137</b>   |                                    |

# Description

We're excited to offer this exclusive 2-bedroom apartment in Ladera San José—designed with extra space and comfort in mind, way beyond your typical layout. It's in a prime spot, nestled between Palmilla, Querencia, and El Dorado golf courses. The area is growing fast, with a new shopping center, Club House, and a second phase all in the works—making it a great opportunity for future value. You'll also love the easy access to top schools like Picacho McGregor, H+ Hospital, the Hampton Inn, gyms, over 15 restaurants, a supermarket, and a bank. It's a solid investment in an unbeatable location.

# Property Gallery

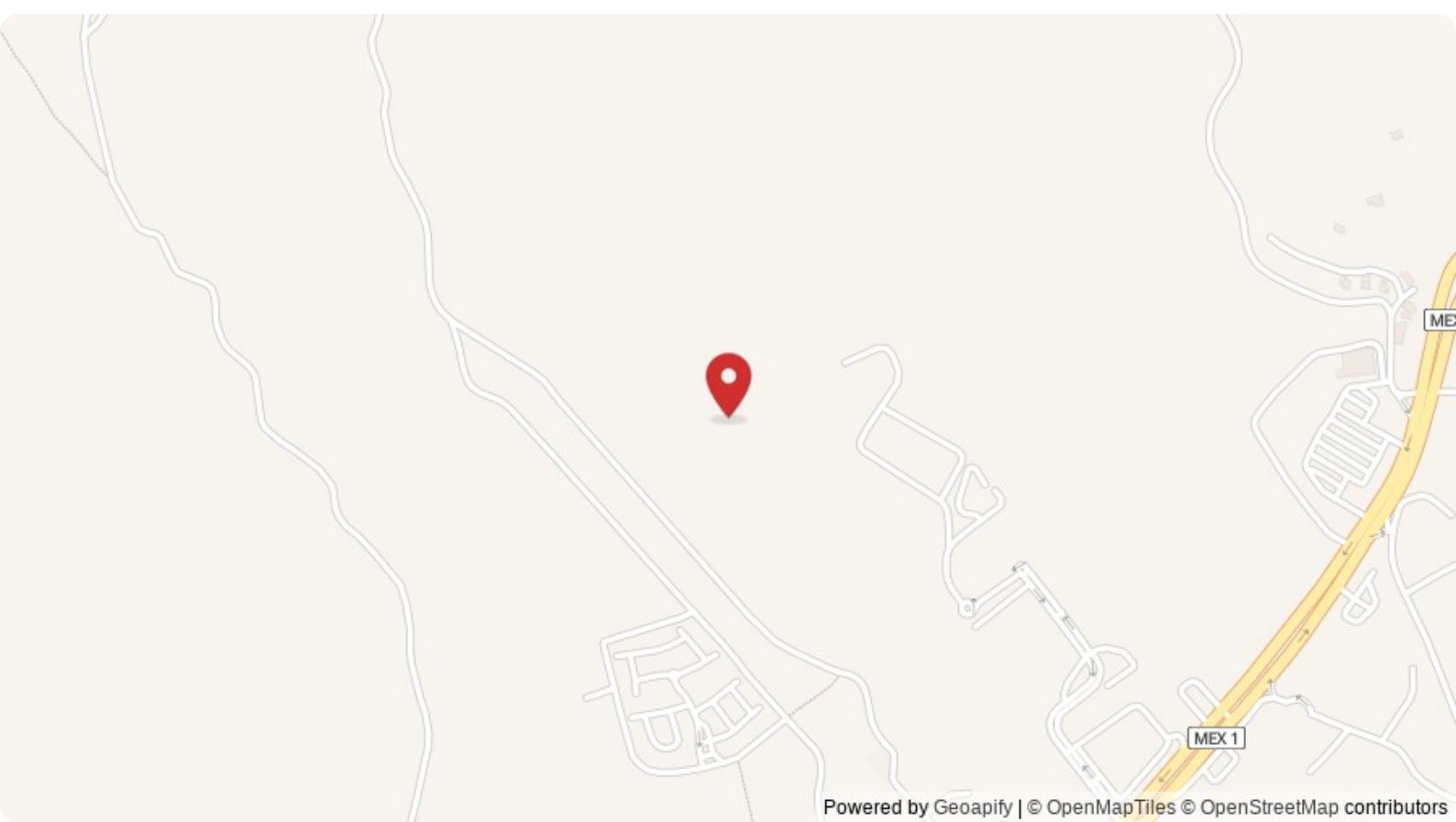


# Property Location

## San Jose Corridor

Ladera Phase 1

|                              |                                 |
|------------------------------|---------------------------------|
| <b>Latitude</b><br>23.005751 | <b>Longitude</b><br>-109.739296 |
|------------------------------|---------------------------------|



**Scan QR to view property online**



<https://beincabo.com/property-detail/?mls=25-2137>