



\$195,000 USD

Pescadero

Pacific

PROPERTY TYPE Land	AREA 1,000 m²
BEDROOMS 0	BATHROOMS 0
MLS NUMBER 25-1546	

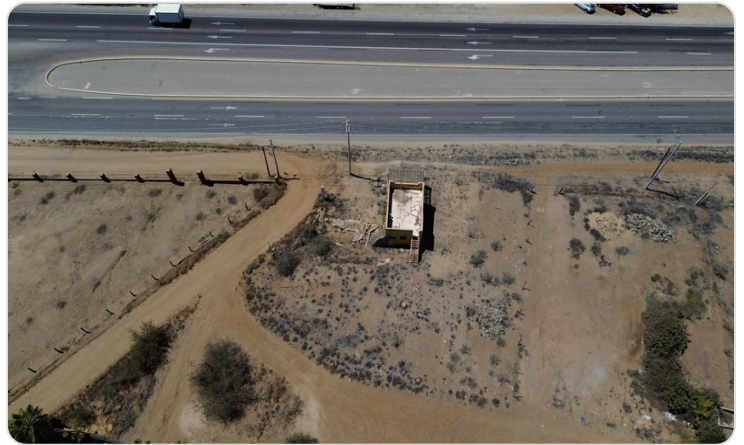
Description

This 1,000m² (1/4 acre) property offers a prime location next to the highway with ocean views, making it an excellent opportunity for a business or mixed-use development. Unlike an empty lot, it already features a versatile structure, including one bedroom, one bathroom, and a front office that can easily be converted into a kitchen and living space.

The property is fully equipped with electricity, water, and telephone services, ensuring a seamless transition for immediate use. Additionally, there is roof access, allowing for even better ocean views and the possibility of adding more living quarters or a palapa.

With ample space available, there's potential to build a swimming pool wit

Property Gallery



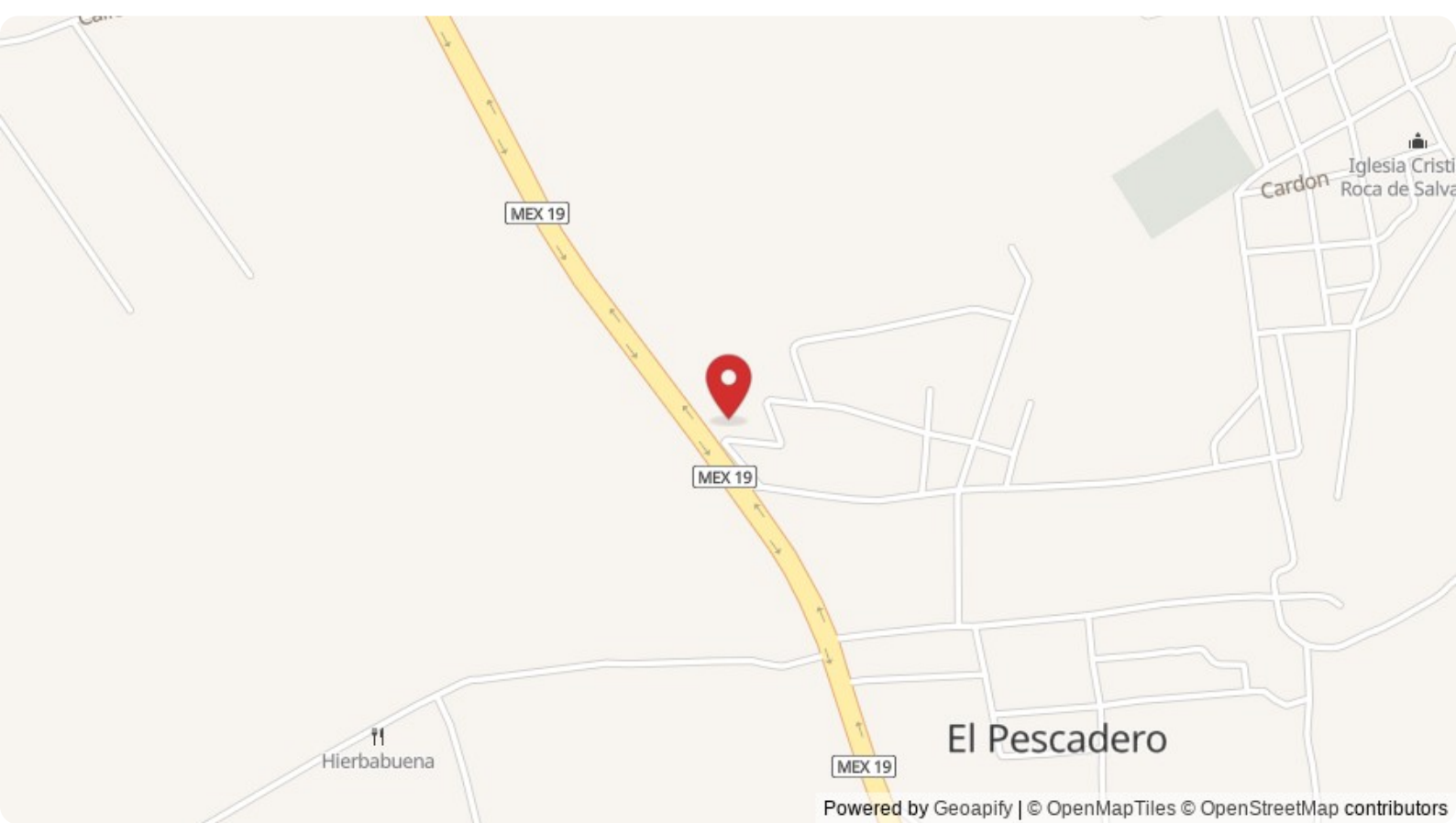
Property Location

Pacific

Pescadero

Latitude
23.373123

Longitude
-110.176862



Scan QR to view property online



<https://beincabo.com/property-detail/?mls=25-1546>