



**\$2,200,000 USD**

## Dunna

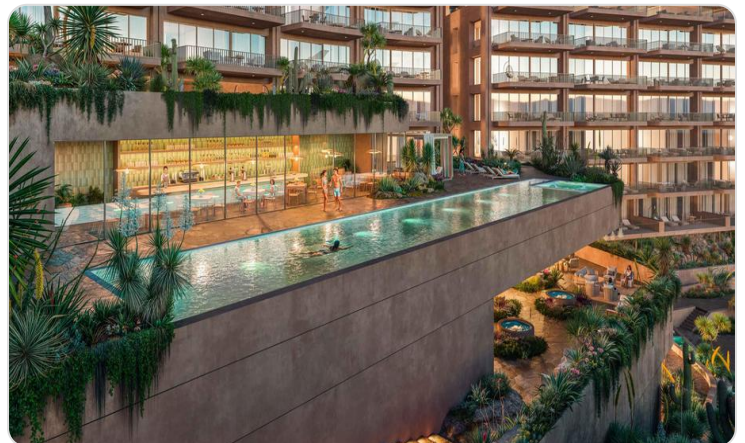
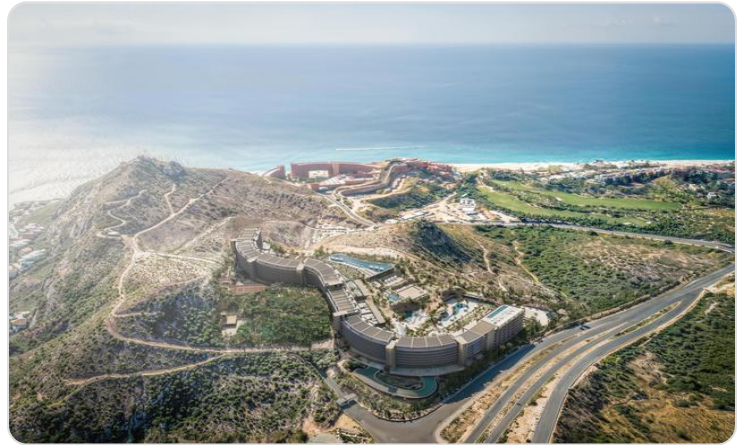
San Jose Corridor

|                                |                                    |
|--------------------------------|------------------------------------|
| PROPERTY TYPE<br><b>Condos</b> | AREA<br><b>4,465 m<sup>2</sup></b> |
| BEDROOMS<br><b>3</b>           | BATHROOMS<br><b>3</b>              |
| MLS NUMBER<br><b>25-1044</b>   |                                    |

# Description

Welcome to Dunna - A New Standard of Luxury in Cabo. More than a residence, Dunna is a vibrant, fully integrated community where luxury, culture, and recreation converge. Designed by renowned architect Sordo Madaleno, this visionary development seamlessly blends timeless elegance with natural tranquility, offering meticulously crafted residences and garden villas complemented by world-class amenities. Elevated Living, Unmatched Experiences Choose from 13 thoughtfully designed floor plans from 2 - 5 bedrooms ranging from 1,475 - 6,458 sq. ft., featuring seamless indoor-outdoor living, elegant finishes, private rooftops, Jacuzzis, and lush garden terraces.

# Property Gallery



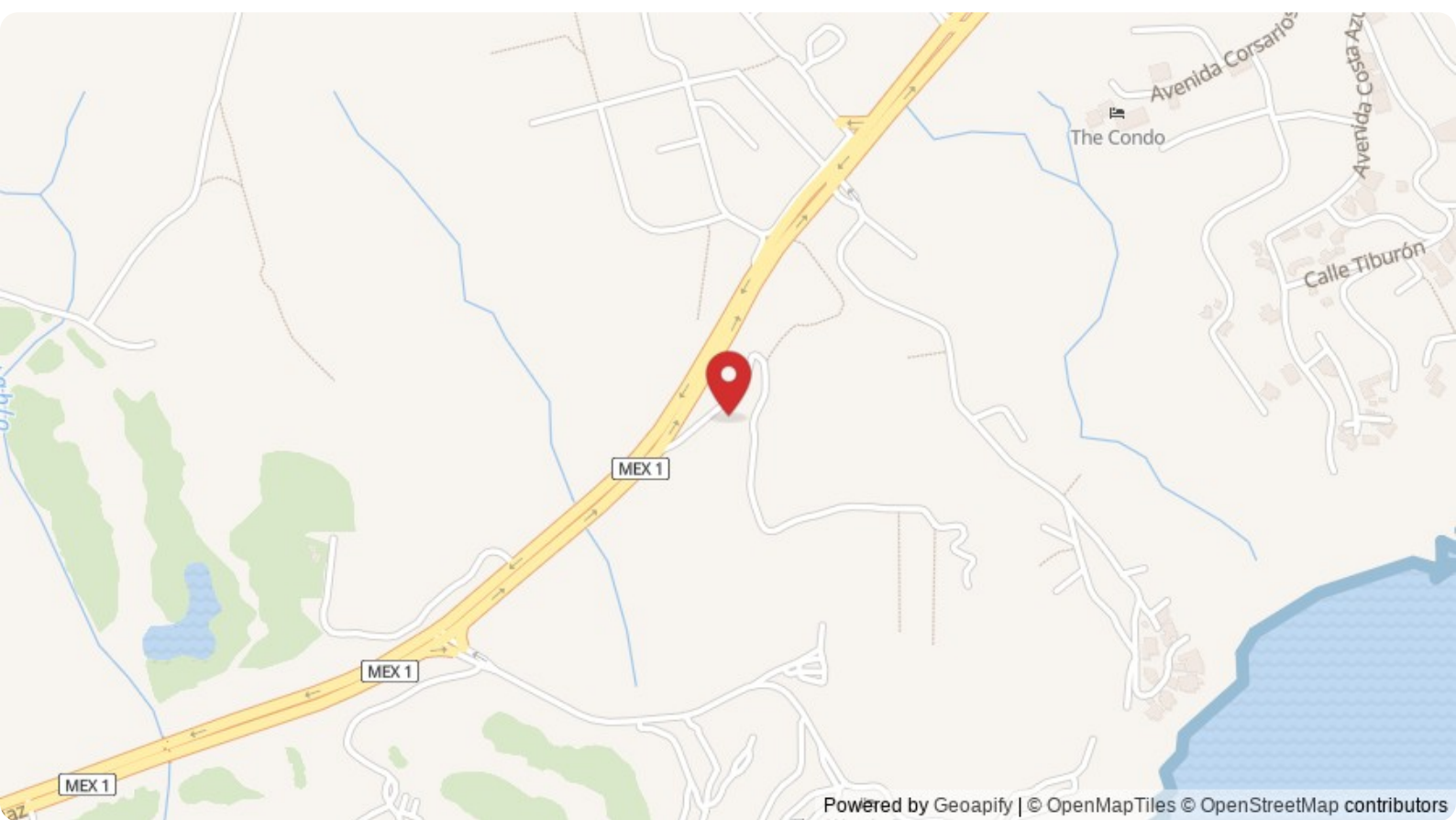
# Property Location

## San Jose Corridor

Dunna

**Latitude**  
22.996041

**Longitude**  
-109.736975



**Scan QR to view property online**



<https://beincabo.com/property-detail/?mls=25-1044>