



\$390,000 USD

Rancho Cerro Colorado

San Jose Corridor

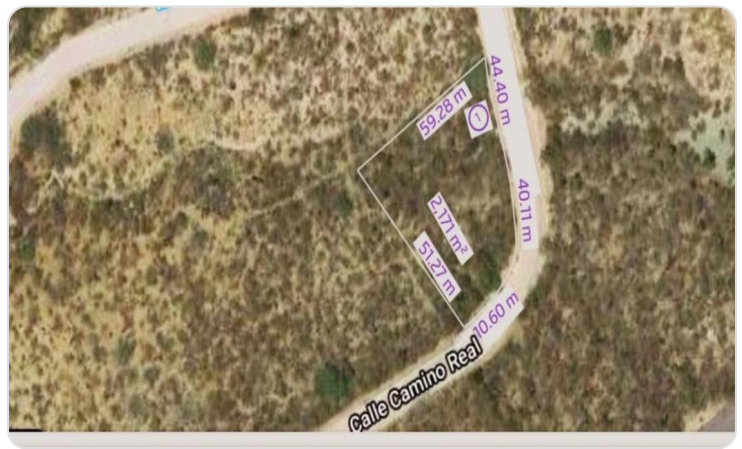
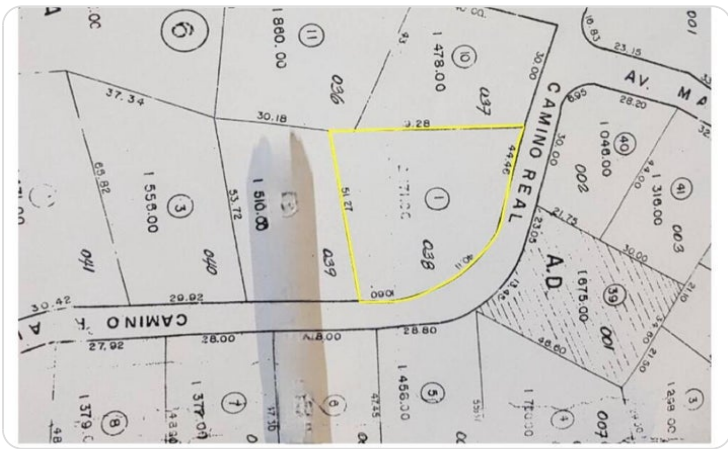
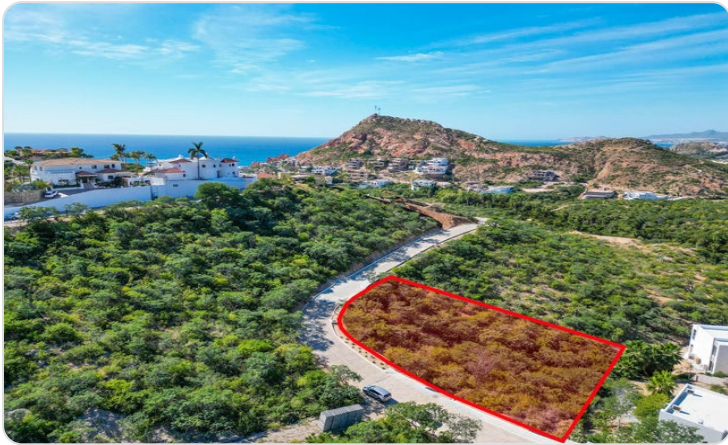
PROPERTY TYPE Land	AREA 2,471 m²
BEDROOMS 0	BATHROOMS 0
MLS NUMBER 24-5873	

Description

Prime opportunity to build your dream home; this oversized lot can accommodate a large estate. Let your imagination take you to the many possibilities with this 2,471 square meters lot (26,598 sq ft). Boasting breathtaking vistas to the mountain ranges in a serene setting makes it perfect to enjoy the sunsets. Featuring paved roads, 24hrs security and underground utilities. Located in one of the most exclusive Developments in Los Cabos, with beach access and just minutes from Private Schools, Hospitals, Restaurants, local conveniences, the famous Shoppes at Palmilla including multiple shopping & dining options and only 5 minutes to San Jose's Art District.

Don't miss this chance to own a

Property Gallery



Property Location

San Jose Corridor

Rancho Cerro Colorado

Latitude
22.999248

Longitude
-109.729720



Scan QR to view property online



<https://beincabo.com/property-detail/?mls=24-5873>