



\$2,055,000 USD

General

La Paz

PROPERTY TYPE Land	AREA 28,710,000 m²
BEDROOMS 0	BATHROOMS 0
MLS NUMBER 24-5546	

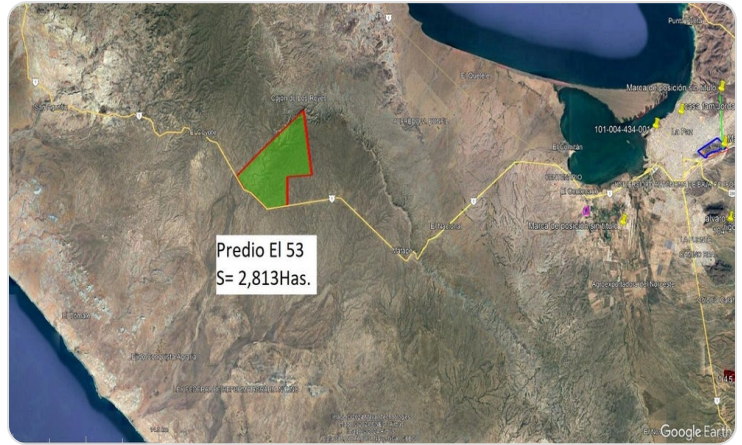
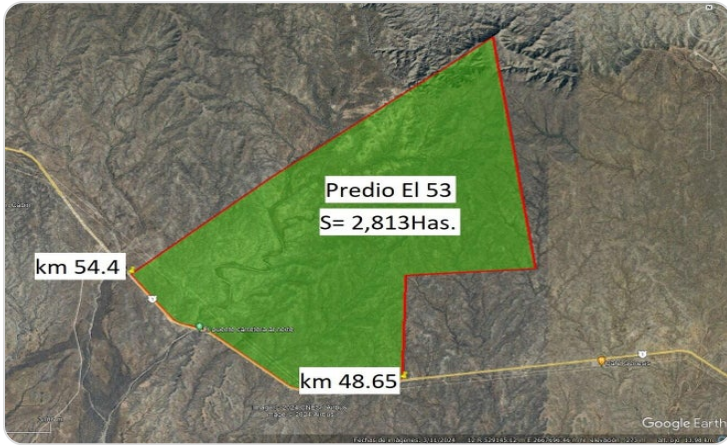
Description

Spectacular property with a large area of 2,871 hectares and 5,940 meters of road frontage, which makes it ideal for a variety of commercial, industrial or tourist projects.

40 minutes from the city of La Paz, 30 minutes from La Paz International Airport and only 25 km away from the spectacular beaches of the Pacific and the proximity to emerging tourist developments in the region and the growth of the area make this land an investment with great potential for revaluation.

Now is the time to take advantage of an affordable price and secure a property that will generate value for years to come.

Property Gallery

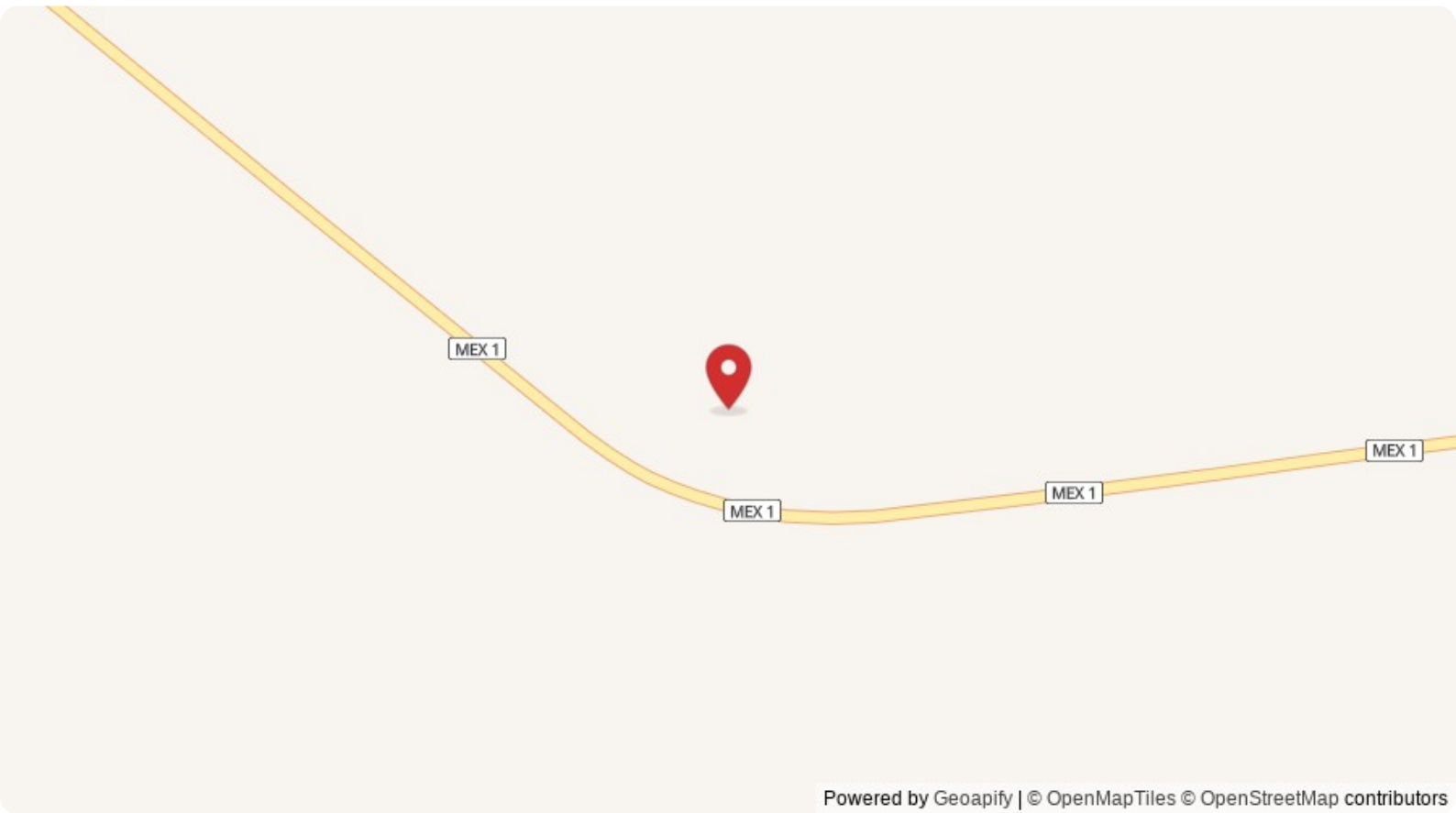


Property Location

La Paz

General

Latitude 24.089758	Longitude -110.713563
------------------------------	---------------------------------



Scan QR to view property online



<https://beincabo.com/property-detail/?mls=24-5546>