



\$160,000 USD

Lighthouse Point Est

East Cape

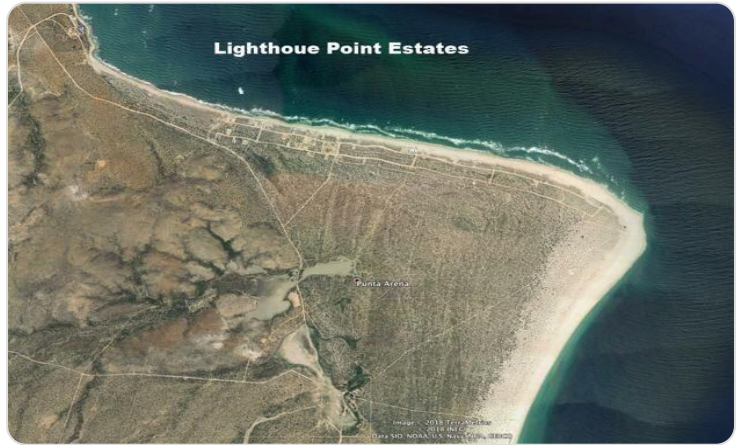
PROPERTY TYPE Land	AREA 1,874 m²
BEDROOMS 0	BATHROOMS 0
MLS NUMBER 24-1980	

Description

This primo elevated building lot located in Lighthouse Point Estates (LPE) is a gated and 24/7 guarded community just steps away from one of the most beautiful white sand beaches that goes for miles on the East Cape - Sea of Cortez. This lot has power and water lines on the street and will offer nice ocean and mountain views from the second story and your roof terrace. The beach is known for its great fishing, kayaking, SUPing, and swimming. Cabo Pulmo, an underwater national park known for diving and snorkeling is 25 minutes away and the Four Seasons Costa Palmas resort is only 15-minutes away in La Ribera that has grocery stores, restaurants, and services. The Airport is an hour away.

LPE

Property Gallery

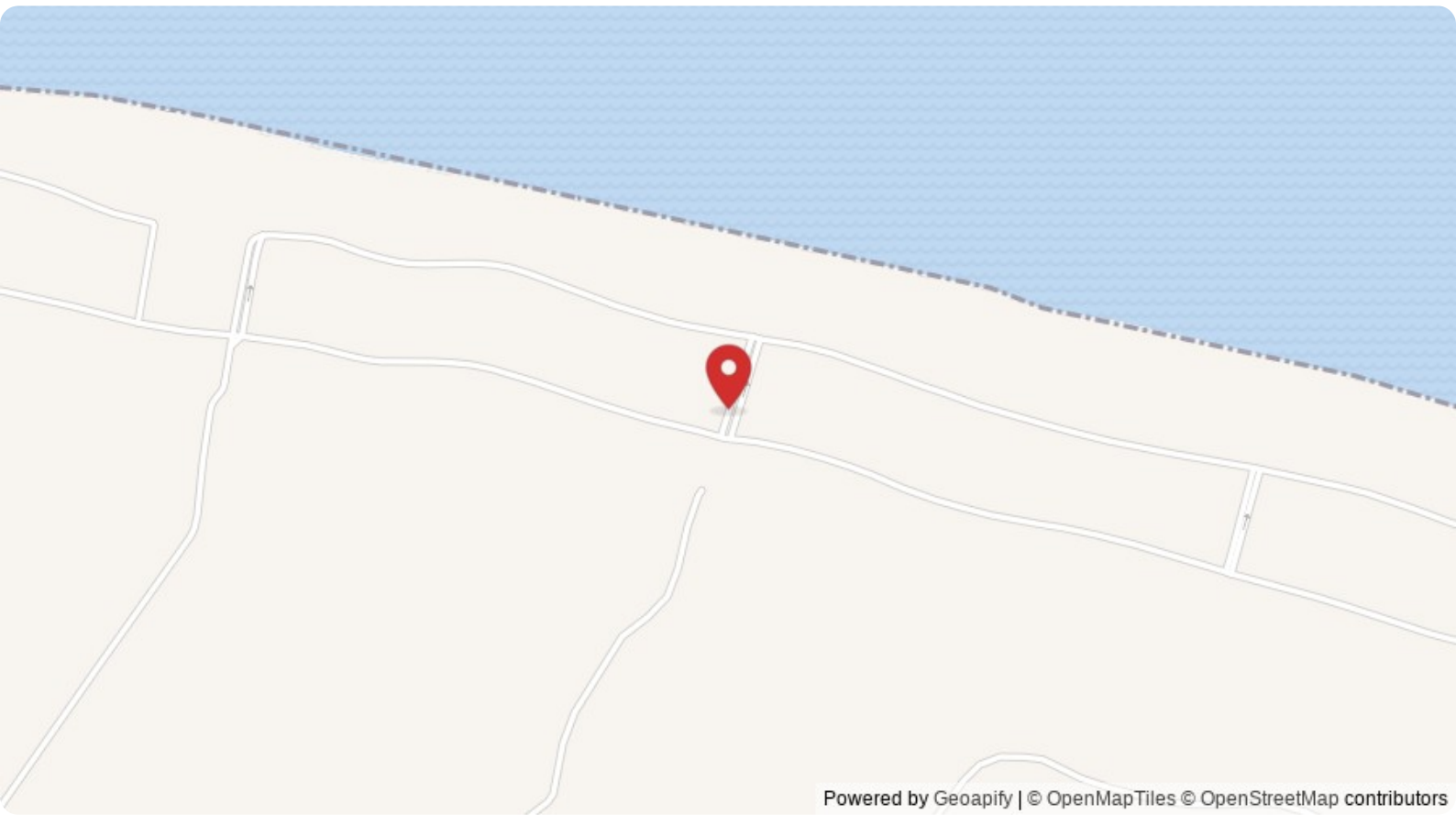


Property Location

East Cape

Lighthouse Point Est

Latitude 23.560345	Longitude -109.487751
------------------------------	---------------------------------



Powered by Geoapify | © OpenMapTiles © OpenStreetMap contributors

Scan QR to view property online



<https://beincabo.com/property-detail/?mls=24-1980>